



**NAUTICAL
STRUCTURES**
Marine Engineering and Manufacturing

EZ Deck Crane
Hydraulic Lay-Down Series
2500/8800lb (1134/13991kg)



EZ-SYSTEMS LAY-DOWN TYPE HYDRAULIC DECK CRANE

For over a decade the *EZ-Systems* Hydraulic Deck Crane has proven to be of the highest state-of-the-art yacht crane technology in an aesthetically pleasing design. Nautical Structures manufactures the Lay-Down crane design in capacities from 2500-pounds to over 10,000-pounds, with and without hydraulic telescoping boom sections.

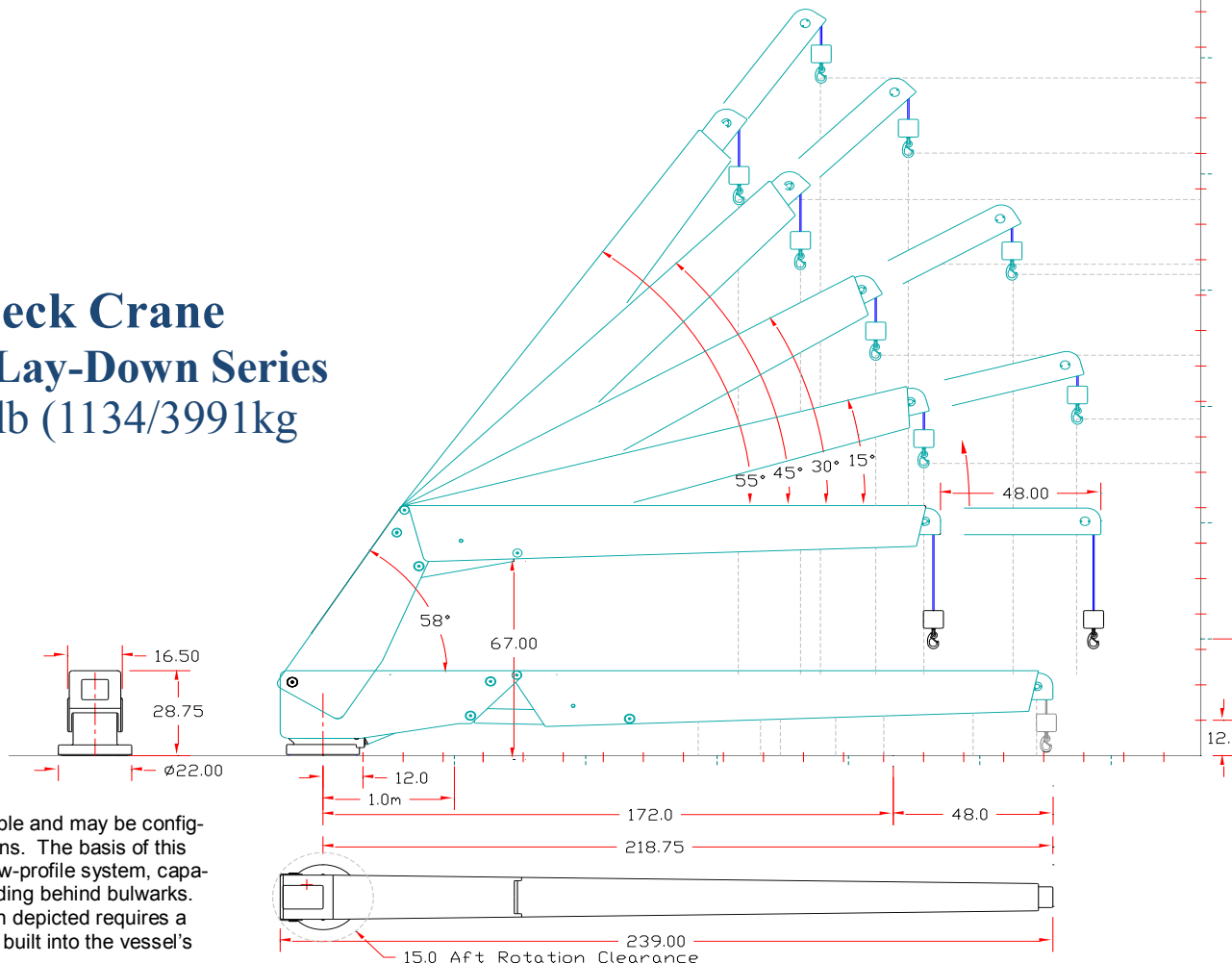
The *EZ-2200-LD-FB* shown (*above left*) is a 2200-pound capacity crane featuring a lay-down boom design, integrated into this vessel's forward bulwarks for stowage. The crane has been engineered and designed to the MCA "*Mega Yacht Code*", compliant with LSA-Rules. The *EZ-LD* crane's aluminum boom is capable of being loaded to its full safe working load capacity in *any* position without restriction. The intelligent engineering inherent in this design allows distributed load-deflection across the boom during moments of dynamic loading, reducing the amount of shock-loading transmitted to the deck. Virtually silent-operating, our *Hydraulic Linear Winch* system, a totally non-fouling winch design reflects the innovative and dependably safe operating characteristics built into the extending boom. This feature adds the additional element of operational safety as the winch travels with the boom during operation of the crane. This prevents any possibility of two-blocking the system causing damage to the Spectron line. Lloyd's Register approved, the linear winch has been developed to meet all LSA Rules in application as a Rescue Boat Launching Davit. The Linear Winch may be armed for emergency use with the removal of a safety pin. When armed, the Linear Winch is capable of being placed into a free-fall condition with lanyard control from the rescue boat. Releasing the lanyard at any time during the free-fall will brake the winch and halt the fall. The crane features 300° hydraulic power rotation providing the ultimate in tender-handling convenience. Control of the crane is with a remotely operated wireless joy-stick proportional control on an optional-use removable pendant. Manual hydraulic controls are also provided, located behind a hinged and latched access panel. A weld-in deck platter is the typical mount for the *EZ-Systems Lay-Down crane*, although a standpipe mount may also be used in applications with GRP constructed vessels. The *EZ-Systems Lay-Down* crane is finished to our highest standards. The aluminum structure is chromated and then primed with a two-part epoxy primer. Then the system is faired smooth, and then primed again. The crane is hand sanded, then moved into our heated finish booth where it is coated with a two-part *Aw/GRIP* urethane spray-applied paint finish in a color of white to match your vessel. The crane system is static load tested to 2.2 x design load and then dynamic load tested to 1.1 x design load, with a classification society surveyor on premises for full class certification.



EZ Deck Crane

Hydraulic Lay-Down Series

2500/8800lb (1134/3991kg)



Pedestal bases are available and may be configured for specific applications. The basis of this crane's design is a very low-profile system, capable of being built into or hiding behind bulwarks. The very low-profile design depicted requires a foundation mounting plate built into the vessel's deck structure.

Floating-Flange standpipe mounting is available. Standpipe diameters will vary depending on the actual moment capacity of the crane.

MECHANICAL SPECIFICATIONS

Hydraulic Boom Luffing: 0° to 58° with full load capacity.

Crane;	Boom Angle	Retracted	Extended
Reach	58°	112" / 285cm	137" / 348 cm
Reach	45°	132" / 335cm	163" / 414 cm
Reach	30°	153" / 388cm	195" / 495 cm
Reach	15°	168" / 427cm	214" / 544 cm
Reach	0°	172" / 436cm	220" / 559 cm

Aft rotation clearance: 22" / 56 cm
360° hydraulic power rotation.

Hydraulic Linear Winch system. 120 /fpm 0.6 /mps gravity free-fall system. Rigged 7:1 with Spectron 12 Plus fiber line.
~ Stainless Steel Certified Load-Release Hook optional.~

Cable pay-out: 35' / 10.66m

Crane weight: EZ-4000-KB-EX: 2900 Lbs. / 1318 Kgs.

Weight, pedestal base (average): 280 Lbs. / 128 Kgs.

ELECTRIC – HYDRAULIC SPECIFICATIONS

24V DC Supply on a 20 amp breaker.

24V DC Joy-stick operated proportional control.

* Manual control back-up.

* Wireless proportional control is available as an option.

15 Hp HPU, 3000 psi / 203 bar, 7 gpm / 26 lpm output.

20 Hp HPU, 3000 psi / 203 bar, 9 gpm / 34 lpm output.

Fluid type: AW-68 or AW-34, ISO quality 17/15/12

AVAILABLE RATED CAPACITIES

EZ-2500-LD: 2,500 Lbs. / 1136 Kgs. Up to 50,000 Ft/Lb.

EZ-4000-LD: 4,000 Lbs. / 1818 Kgs. Up to 80,000 Ft/Lb.

EZ-5500-LD: 5,500 Lbs. / 2500 Kgs. Up to 100,000 Ft/Lb.

EZ-6600-LD: 6,600 Lbs. / 3000 Kgs. Up to 150,000 Ft/Lb.

EZ-8800-LD: 8,800 Lbs. / 4000 Kgs. Up to 200,000 Ft/Lb.

Foot-pound capacity; maximum reach x lifting capacity.

12 Month limited warranty.

7301 114th Avenue North • Largo, Florida 33773

Phone: (727) 541-6664 • Facsimile: (727) 541-6353 • North America Toll Free: (888) 541-6664

Email: sales@nautical-structures.com • www.nautical-structures.com