



**NAUTICAL
STRUCTURES**
Marine Engineering and Manufacturing

**EZ Deck Crane
Fixed Boom Series
2,500 - 20,000lb
1134– 9070kg**



EZ- HYDRAULIC DECK CRANE SERIES SOLAS

- Aesthetically pleasing design.
- Available in lifting capacities of up to twenty-thousand pounds, and in working boom lengths starting at thirteen-feet.
- Available special-ordered built to MCA Mega Yacht Code compliance.
- Capable of being loaded to its full safe working load capacity in *any* position without restriction.
- The intelligent engineering inherent in this design allows distributed load-deflection across the boom during moments of dynamic loading, reducing the amount of shock-loading transmitted to the deck.
- Virtually silent-operating *Hydraulic Linear Winch* system, a totally non-fouling winch design reflects the innovative and dependably safe operating characteristics built into this crane.
- Features 359° hydraulic power rotation providing the ultimate handling convenience.
- Remotely operated with a proportional joy-stick control on a removable pendant.
- Optional wireless proportional control available.
- A pedestal base is the typical mounting structure.
- A floating-flange standpipe mount may also be used in some applications.
- Powered by a hydraulic power unit, available in various horsepower configurations.
- The *EZ-Systems* crane is finished to our highest standards. The aluminum structure is etched and then primed with a two-part epoxy primer. The system is faired smooth, and then primed again. The crane is hand sanded, the moved into our heated finish booth where it is coated with a two-part urethane paint products. Our standard colors are Matterhorn white, Off white, and Snow white. All other colors will be special order and quoted upon request.
- Warranty:1-Year including materials, electrical, hydraulics and labor. See warranty for details.

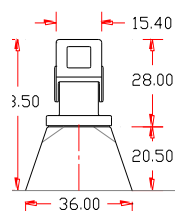


EZ Deck Crane

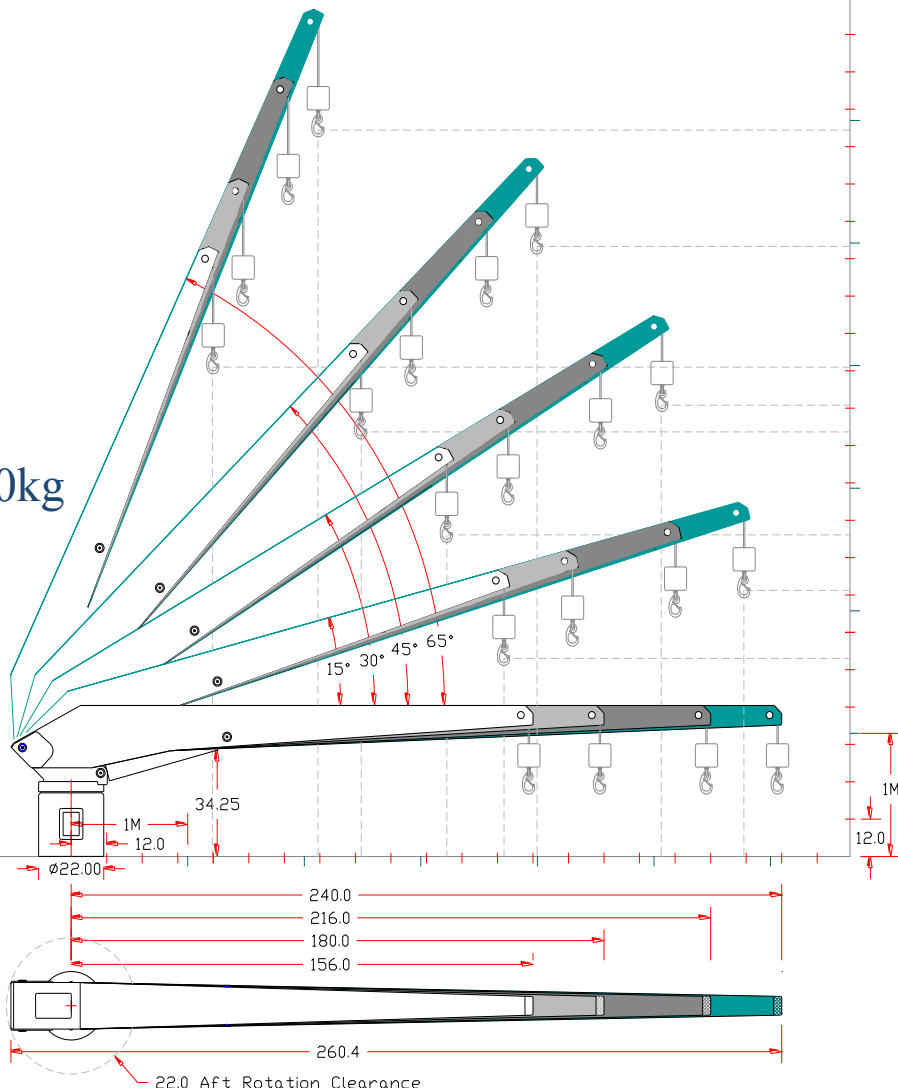
Fixed Boom Series

2,500 - 20,000lb / 1134 - 9070kg

SOLAS



Pedestal bases may be cylindrical or pyramid in style, bolt-down or weld-down. The height of the pedestal base is variable. Bolt-down bases may have an external bolting flange. Please add an additional 3.0" / 76 mm to the perimeter dimensions shown on this drawing for this feature. Floating-Flange standpipe mounting is available. Standpipe diameters will vary depending on the actual moment capacity of the crane. Longer boom lengths are available as a Special-order item.



MECHANICAL SPECIFICATIONS

ELECTRIC – HYDRAULIC SPECIFICATIONS

Hydraulic Boom Luffing: 0° to 66° with full load capacity.

24V DC Supply on a 20 amp breaker.

EZ-156 Reach, 66° - 48" / 121cm 15° - 146" / 370cm
 EZ-180 Reach, 66° - 58" / 147cm 15° - 169" / 429cm
 EZ-216 Reach, 66° - 73" / 185cm 15° - 204" / 518cm
 EZ-240 Reach, 66° - 83" / 210cm 15° - 227" / 576cm

24V DC Joy-stick operated proportional control.
 Wireless proportional control is available as an option.

7.5 Hp HPU, 3000 psi / 203 bar, 3 gpm / 11 lpm output.
 10 Hp HPU, 3000 psi / 203 bar, 5 gpm / 19 lpm output.
 15 Hp HPU, 3000 psi / 203 bar, 7 gpm / 9.5 lpm output.
 Fluid type: AW-68, ISO quality 17/15/12

Aft rotation clearance: 21" / 53 cm
 360° hydraulic power rotation.

Hydraulic Linear Winch system. Rigged 5:1 with stainless steel wire rope, stainless steel weight and stainless steel safety snap hook.

RATED CAPACITY

Standard cable pay-out: 24' / 7.31m
 Crane weight, EZ-2500/3000: 1550lb / 703kg
 Crane weight, EZ-3500/4000/5000: 1700lb / 772kg
 Crane weight, EZ-5000: 1950lb / 884kg

EZ-2500: 2,500lb / 1134kg Up to 50,000 ft/lb
 EZ-3000: 3,000lb / 1360kg Up to 60,000 ft/lb
 EZ-3500: 3,500lb / 1587kg Up to 70,000 ft/lb
 EZ-4000: 4,000lb / 1814kg Up to 80,000 ft/lb
 EZ-5000: 5,000lb / 2268kg Up to 80,000 ft/lb

Standpipe Weight (average): 650lb / 295kg
 Weight, pedestal base (average): 340lb / 155kg

Foot-pound capacity; maximum reach x lifting capacity.

12 Month limited warranty.

© 2014 - NSI

7301 114th Avenue North • Largo, Florida 33773

Phone: (727) 541-6664 • Facsimile: (727) 541-6353 • North America Toll Free: (888) 541-6664

Email: sales@nautical-structures.com • www.nautical-structures.com