



**NAUTICAL  
STRUCTURES**  
Marine Engineering and Manufacturing

**EZ Deck Crane**  
Telescopic Series  
2,500-20,000lb (1134 - 9070kg)  
**SOLAS**



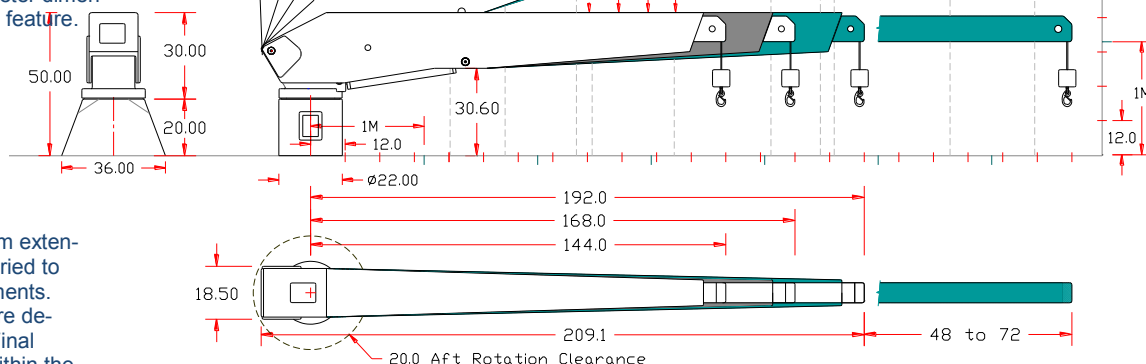
### **EZ-SYSTEMS BOOM EXTENDING HYDRAULIC DECK CRANE**

For over a decade the *EZ-Systems* Hydraulic Deck Crane has proven to provide the highest state-of-the-art yacht crane technology in an aesthetically pleasing design. The *EZ-Systems* hydraulic deck crane is available in lifting capacities of up to twelve-thousand pounds, and in stowed boom lengths starting at twelve-feet. Any of these cranes may be special-ordered built to MCA Mega Yacht Code / Classification Society compliance. This specification sheet describes our smaller cranes with lifting capacities of up to five thousand pounds. The *EZ-System's* telescoping aluminum boom is capable of being loaded to its full safe working load capacity in *any* position without restriction. The intelligent engineering inherent in this design allows distributed load-deflection across the boom during moments of dynamic loading, reducing the amount of shock-loading transmitted to the deck. Virtually silent-operating, our *Hydraulic Linear Winch* system, a totally non-fouling winch design reflects the innovative and dependably safe operating characteristics built into the extending boom. This feature adds the additional element of operational safety as the winch travels with the boom extension during operation of the crane. This prevents any possibility of two-blocking the system causing damage to the cable. The crane features 300° hydraulic power rotation providing the ultimate in tender-handling convenience. The crane is remotely operated with a wireless joy-stick operated proportional control on a removable pendant. A pedestal base is the typical mounting structure for the *EZ-Systems* crane, although a standpipe mount may also be used in some applications. The *EZ-Systems* Crane is powered by a hydraulic power unit, available in various horsepower configurations, or may take power from the ship's central hydraulic system. The *EZ-Systems* crane is finished to our highest standards. The aluminum structure is anodized and then primed with a two-part epoxy primer. The system is faired smooth, and then primed again. The crane is hand sanded, then moved into our heated finish booth where it is coated with a two-part urethane spray-applied paint finish. Our standard colors are Matterhorn white, Off white, and Snow white. All other colors will be special order and quoted upon request. The crane system is assembled and installed onto one of our three dynamic load-testing centers where our quality assurance team dynamic load tests and inspects every crane we produce prior to delivery to the customer. Warranty: 1-Year, including materials, electrical, hydraulics and labor. See warranty for details.



## EZ Deck Crane Telescopic Series 2,500-20,000lb (1134 - 9070kg) SOLAS

Pedestal bases may be cylindrical or pyramid in style, bolt-down or weld-down. The height of the pedestal base is variable. Bolt-down bases may have an external bolting flange. Please add an additional 3.0" / 76 mm to the perimeter dimensions shown on this drawing for this feature.



The crane's stowed length and boom extension's telescoping length may be varied to accommodate the vessel's requirements. The most common configurations are depicted on this specification sheet. Final configuration must be maintained within the moment capacity of the crane's structure.

MECHANICAL SPECIFICATIONS	ELECTRIC – HYDRAULIC SPECIFICATIONS
Hydraulic Boom Luffing: 0° to 66° with full load capacity.	24V DC Supply on a 20 amp breaker.
EZ-144-192 Reach, 66° - 48" / 121 15° - 182" / 462 cm	24V DC Joy-stick operated proportional control.
EZ-168-228 Reach, 66° - 58" / 147 15° - 216" / 549 cm	Wireless proportional control is available as an option.
EZ-192-264 Reach, 66° - 68" / 172 15° - 251" / 638 cm	7.5 Hp HPU, 3000 psi / 203 bar, 3 gpm / 11 lpm output.
EZ-216-288 Reach, 66° - 78" / 198 15° - 274" / 696 cm	10 Hp HPU, 3000 psi / 203 bar, 5 gpm / 19 lpm output.
Aft rotation clearance: 20" / 51 cm	15 Hp HPU, 3000 psi / 203 bar, 7 gpm / 9.5 lpm output.
300° hydraulic power rotation. 180° and 270° is available.	Fluid type: AW-68, ISO quality 17/15/12
<i>Hydraulic Linear Winch</i> system. Rigged 6:1 with stainless steel wire rope, stainless steel weight and stainless steel safety snap hook.	RATED CAPACITY
Cable pay-out: (Longer pay-out is available) 24' / 7.31m	EZ-2500: 2,500 Lbs. / 1134kg Up to 50,000 ft/lb
Crane weight, EZ-2500/3000: Avg. 1900lb / 862kg	EZ-3000: 3,000 Lbs. / 1360kg Up to 60,000 ft/lb
Crane weight, EZ-3500/4000: Avg. 2150lb / 975kg	EZ-3500: 3,500 Lbs. / 1587kg Up to 70,000 ft/lb
Crane weight, EZ-5000: Avg. 2300lb / 1043kg	EZ-4000: 4,000 Lbs. / 1814kg Up to 80,000 ft/lb
Standpipe Weight (average): 650lb / 295kg	EZ-5000: 5,000 Lbs. / 2268kg Up to 80,000 ft/lb
Weight, pedestal base (average) 340lb / 155kg	Foot-pound capacity; maximum reach x lifting capacity.
	12 Month limited warranty.
	© 2014 - NSI

7301 114th Avenue North • Largo, Florida 33773

Phone: (727) 541-6664 • Facsimile: (727) 541-6353 • North America Toll Free: (888) 541-6664

Email: sales@nautical-structures.com • www.nautical-structures.com