



**NAUTICAL  
STRUCTURES**  
Marine Engineering and Manufacturing

**EZ Deck Crane**  
**Hydraulic Double Telescopic Series**  
**2,500 to 20,000lb**  
**1,134 to 9071kg**



## EZ-SYSTEMS DOUBLE-TELESCOPING TYPE HYDRAULIC DECK CRANE

For over a decade the *EZ-Systems* Hydraulic Deck Crane has proven to provide the highest state-of-the-art yacht crane technology in an aesthetically pleasing design. The *EZ-Systems* hydraulic deck crane is available in lifting capacities of up to ten-thousand pounds, and in stowed boom lengths starting at ten-feet. All of these cranes are built to order and to suit our individual client's needs. Any of these cranes may be special-ordered built to MCA Mega Yacht Code / Classification Society compliance. The Double-Telescoping deck crane's unique design allows the crane to stow in almost half of its maximum deployed length. The *EZ-8000-DEX crane's Double-Telescoping* aluminum boom is capable of being loaded to its full safe working load capacity in *any* position without restriction. The intelligent engineering inherent in this design allows distributed load-deflection across the boom during moments of dynamic loading, reducing the amount of shock-loading transmitted to the deck. Virtually silent-operating, our *Hydraulic Linear Winch* system, a totally non-fouling winch design reflects the innovative and dependably safe operating characteristics built into the extending boom. This feature adds the additional element of operational safety as the linear winch travels with the boom extension during operation of the crane. This prevents any possibility of two-blocking the system causing damage to the cable. The crane features 300° hydraulic power rotation providing the ultimate in tender-handling convenience. The crane is remotely operated with a wireless joy-stick operated proportional control provided with an optional-use removable pendant. A pedestal base is the typical mounting structure for the *EZ-Systems* crane, although a standpipe mount may also be used in some applications. The *EZ-8000-DEX* Crane is powered by a 15-Hp hydraulic power unit located below deck. The *EZ-Systems* crane is finished to our highest standards. The aluminum structure is chromated and then primed with a two-part epoxy primer. The system is faired smooth, and then primed again. The crane is hand sanded, then moved into our heated finish booth where it is coated with a two-part urethane spray-applied paint finish. Our standard colors are Matterhorn white, Off white, and Snow white. All other colors will be special order and quoted upon request. The crane system is assembled and installed onto one of our three dynamic load-testing centers where our quality assurance team dynamic load tests and inspects every crane we produce prior to delivery to the customer. Warranty: 1-Year including materials, electrical, hydraulics and labor. See warranty for details.

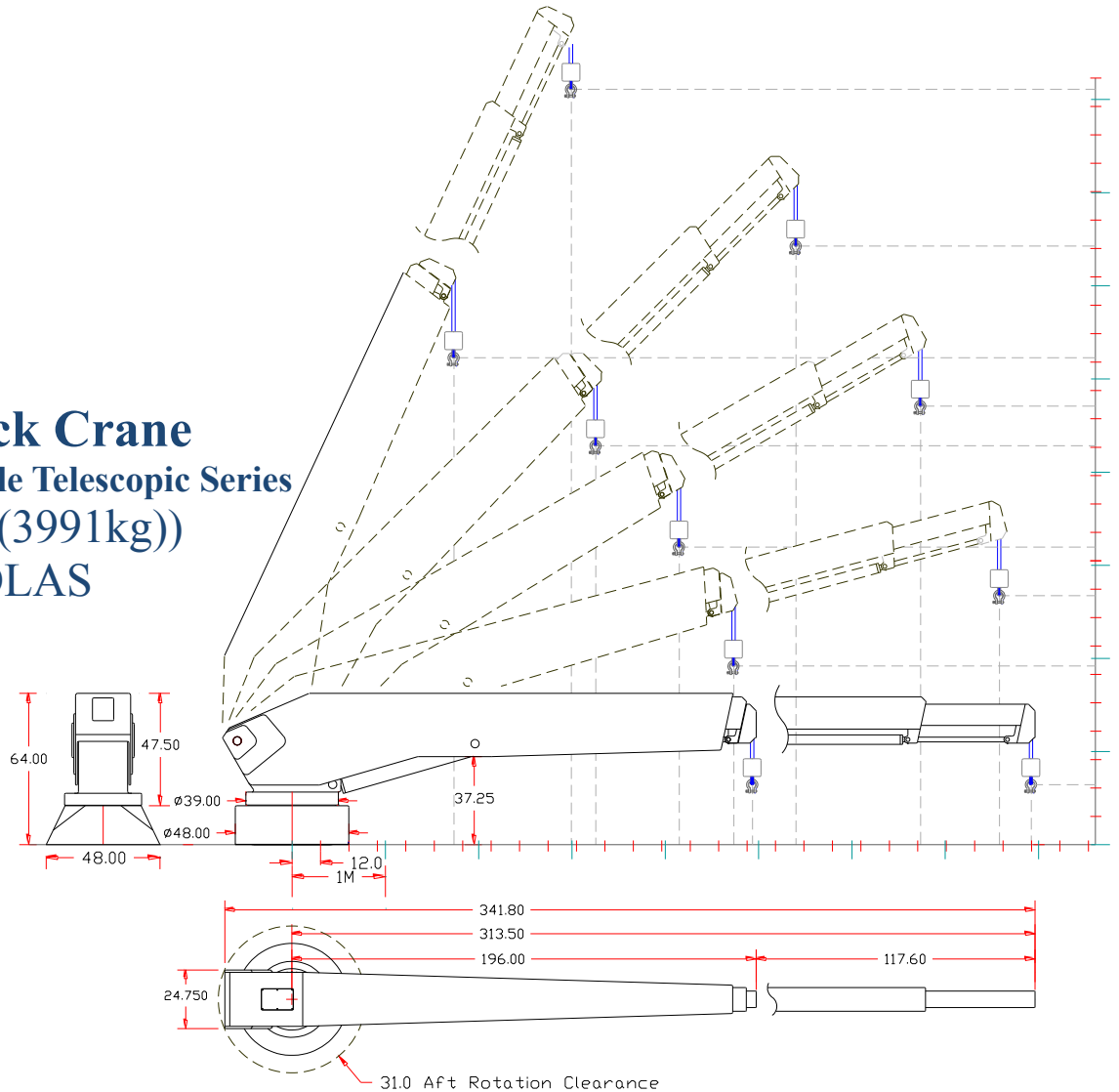


## EZ Deck Crane

### Hydraulic Double Telescopic Series

### 8800lb (3991kg)

### SOLAS



#### MECHANICAL SPECIFICATIONS

Hydraulic Boom Luffing: 0° to 58° with full load capacity.

Crane;	Boom Angle	Retracted	Extended
Reach	65°	68" / 173 cm	118" / 300 cm
Reach	45°	128" / 325 cm	212" / 538 cm
Reach	30°	163" / 414 cm	264" / 670 cm
Reach	15°	186" / 472 cm	298" / 757 cm
Reach	0°	194" / 492 cm	312" / 792 cm

Aft rotation clearance: 31.0" / 78.7 cm  
360° hydraulic power rotation.

*Hydraulic Linear Winch system.*  
Rigged 6:1 with Spectron 12 Plus fiber line.  
~ Stainless Steel Certified Load-Release Hook optional.~

Cable pay-out: 28' / 8.53m

Crane weight: EZ-6600-KB-EX: 5600 Lbs. / 2540kg

Weight, pedestal base (average): 1080 Lbs. / 490kg.

#### ELECTRIC – HYDRAULIC SPECIFICATIONS

24V DC Supply on a 20 amp breaker.

24V DC Joy-stick operated proportional control.

\* Manual control back-up.

\* Wireless proportional control is available as an option.

15 Hp HPU, 3000 psi / 203 bar, 7 gpm / 26 lpm output.

20 Hp HPU, 3000 psi / 203 bar, 9 gpm / 34 lpm output.

Fluid type: AW-68 or AW-34, ISO quality 17/15/12

#### AVAILABLE RATED CAPACITIES

EZ-4000-DEX: 4,400lb / 1995kg Up to 80,000 ft/lb

EZ-6600-DEX: 6,600lb / 2993kg Up to 100,000 ft/lb

EZ-8800-DEX: 8,800lb / 3990kg Up to 200,000 ft/lb

Foot-pound capacity; maximum reach x lifting capacity.

12 Month limited warranty.

© 2014 - NSI

7301 114th Avenue North • Largo, Florida 33773

Phone: (727) 541-6664 • Facsimile: (727) 541-6353 • North America Toll Free: (888) 541-6664

Email: sales@nautical-structures.com • www.nautical-structures.com