



**NAUTICAL  
STRUCTURES**  
Marine Engineering and Manufacturing

**MC Series  
Mini Crane  
1000/1500lb (453/680kg)  
120in (304cm)**

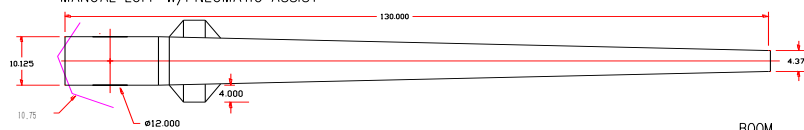


- **SWL:** 1,000lb (453kg) and 1,500lb (680kg), maximum capacity.
- The boom is manually articulated from the horizontal stowed position to any of four boom angles for deployment.
- **Boom articulation:** Our unique PBAS (Pneumatic Boom Assistance System) feature reduces the weight of the boom for virtually effortless deployment.
- **Winch:** Electric drum winch operated by a remote controller on an eight-foot wander-lead, removable for security.
- **Rotation/slew:** Manual rotation/slewing with a custom bearings package for smooth, easy operation. An optional hydraulic power rotating standpipe is available.
- **Mounting structure:** A through-deck mount aluminum standpipe is the typical mounting structure. The standpipe assembly includes an upper deck flange, flange cover, lower trim ring and receiving socket with deck flange. Our standard deck flange angle is 0-degrees unless otherwise specified. An optional deck mount pedestal base is available.
- **Paint finish:** System is finished to our Nautical Structures high level of quality with urethane paint products. Our standard colors are Snow White, Off White & Matterhorn White. All other colors will be special order and quoted upon request.
- **Testing:** Davit system assembled and tested prior to shipment.
- **WARRANTY:** 1- YEAR including materials and workmanship, electrical, hydraulic and labor, see warranty for details.



ELECTRIC DRUM WINCH  
CABLE PAYOUT: 21-FT.  
MANUAL ROTATION  
MANUAL LUFF W/PNEUMATIC ASSIST

MC-1000-1500 DAVIT, W/STANDPIPE



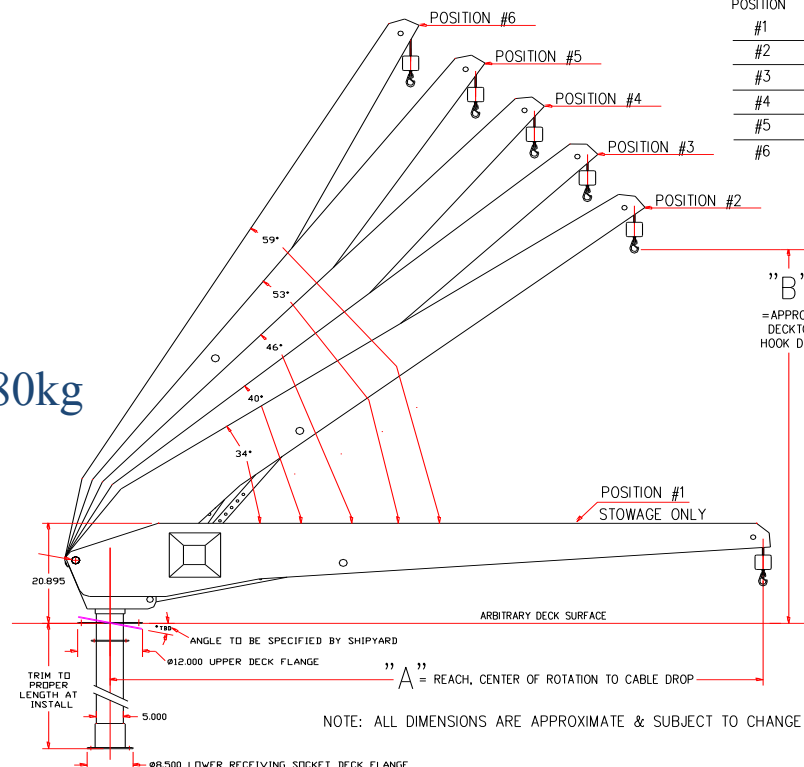
BOOM POSITION	BOOM ANGLE	REACH	DECK TO HOOK
#1	0°	-STOWAGE-NO LOAD	
#2	34°	96-IN	78-IN
#3	40°	88-IN	88-IN
#4	46°	78-IN	98-IN
#5	53°	67-IN	106-IN
#6	59°	55-IN	112-IN

## MC Series

### Mini Crane

1000/1500lb - 453/680kg

120in (304cm)



#### MECHANICAL SPECIFICATIONS

#### ELECTRIC SPECIFICATIONS

Manual Boom Positioning from 30° through 50°.

Reach (Maximum at 34° position): 97in / 246cm

Reach (Minimum at 60° position): 54in / 137cm

Aft rotation clearance: 10.75in / 27cm

Manual rotation on roller bearings: 360°

Electric Winch system.  
Rigged with stainless steel wire rope, brass weight and stainless steel safety snap hook.

Cable pay-out: 21ft / 6.4m

System weight, MC1000: 275lb / 125kg

System weight, 5" Standpipe: 86lb / 39kg

System weight, MC 1500: 295lb / 134kg

System weight, 5" Standpipe: 137lb / 62kg

#### DC SYSTEMS (MC 1000 ONLY)

MC1000-DC:12V DC, 100amp / 24V DC

#### AC SYSTEMS (MC 1000 & 1500)

115V AC, 60 Hz, 1 Ph. .

230V AC, 60 Hz, 1 Ph.

Weather resistant two-button remote control switch is wired to a 8ft / 2.4m removable pendant.

#### RATED CAPACITY

MC 1000:1,000lb / 453kg

MC 1500:1,500lb / 680kg

MC 1000: 8,000 ft/lb Maximum moment capacity.

MC 1500: 12,000 ft/lb Maximum moment capacity.

12 Month limited warranty.

© 2014 - NSI

7301 114th Avenue North • Largo, Florida 33773

Phone: (727) 541-6664 • Facsimile: (727) 541-6353 • North America Toll Free: (888) 541-6664

Email: sales@nautical-structures.com • www.nautical-structures.com