



**NAUTICAL
STRUCTURES**
Marine Engineering and Manufacturing

HMC Series - 2
Hydraulic Mini Crane
1100/1700lb - 120in
499/771kg - 304cm



- An exceptionally low-profile boom perfect for the Sportfish yacht.
- 10ft (3m) long boom capable of being fully loaded to its safe working load capacity in *any* position without restriction.
- Features our silent operating *Hydraulic Linear Winch* system, a totally non-fouling winch design.
- Powered by a remotely mounted one-horsepower hydraulic power unit for performance and hidden from the elements.
- Aluminum hydraulic cylinders with internal safety locking valves acuate each function for unsurpassed corrosion resistance, dependability and reduced weight.
- Sealed steel bearings permit smooth manual rotation.
- An optional hydraulic power rotating standpipe may be selected for enhanced control and ease of operation.
- A through-deck standpipe is the standard mounting structure for stability and performance.

An optional pedestal base mount may also be used in some applications.

- System is finished to Nautical Structures **highest level of quality**, wash primed, exposed welds are faired, 2-part high build primed again, then two top coats of 2-part urethane paint are applied. Our standard colors are Matterhorn white, Off White and Snow White. All other colors will be a special order and quoted upon request.
- Davit is assembled and tested prior to shipment.
- 1-YEAR WARRANTY including material and workmanship, electrical, hydraulic and labor. See warranty for details.

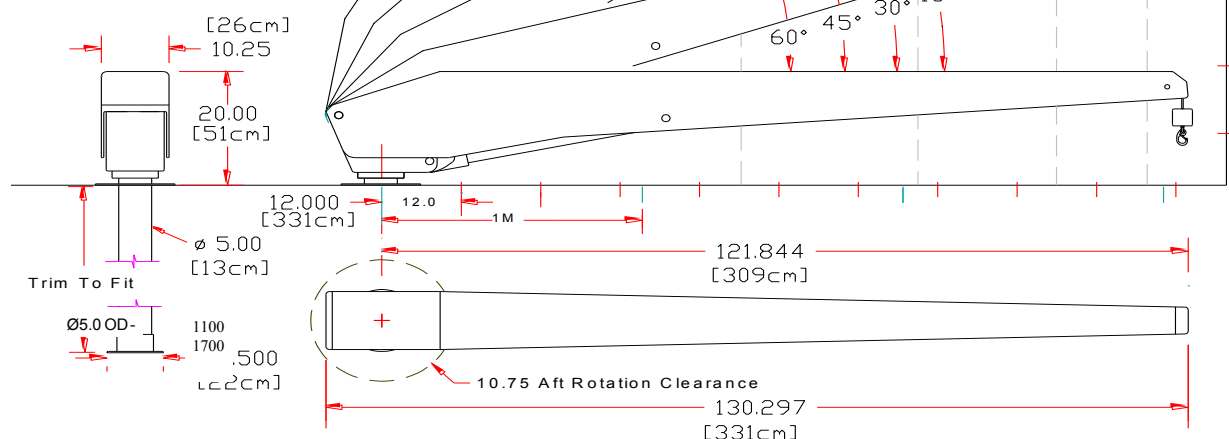


HMC Series - 2

Hydraulic Mini Crane

1100/1700lb - 120in
499/771kg - 304cm

Pedestal base mounting is available. Pedestals may be cylindrical or pyramid in style, bolt-down or weld-down in configuration.



MECHANICAL SPECIFICATIONS	ELECTRIC – HYDRAULIC SPECIFICATIONS
Hydraulic Boom Luffing from 0° through 60°.	115V AC, 60 Hz, 1 Ph. 230V AC, 60 Hz, 1 Ph. 230V AC, 50 Hz, 1 Ph.
Reach (Maximum at 15° position): 118in / 274cm	Waterproof delrin remote control switch is wired to a 20ft./ 6.1m removable pendant.
Reach (Minimum at 60° position): 54in / 137cm	
Aft rotation clearance: 10.75in / 27cm	1 Hp Hydraulic power unit, 3000 psi / 203 bar, 0.5 gpm / 1.8 lpm output. Fluid type: AW-68, ISO quality 17/15/12
Manual rotation on roller bearings: 360° Optional 180° or 259° hydraulic rotating standpipe.	RATED CAPACITY
Hydraulic Linear Winch system. Rigged 6:1 with stainless steel wire rope, brass weight and stainless steel safety snap hook.	
Cable pay-out: 21ft/ 6.4m	HMC-1100-2-120: 1,100lb / 500kg HMC-1700-2-120: 1,700lb / 771kg
System weight, HMC-1100-2: 300lb / 136kg System weight, 5" Standpipe: 120lb / 54kg	HMC-1100: 11,000 ft/lb Maximum moment capacity. HMC-1700: 17,000 ft/lb Maximum moment capacity.
System weight, HMC-1700-2: 320lb / 145kg System weight, 5" Standpipe: 150lb / 68kg	12 Month limited warranty.

© 2014 - NSI

7301 114th Avenue North • Largo, Florida 33773

Phone: (727) 541-6664 • Facsimile: (727) 541-6353 • North America Toll Free: (888) 541-6664

Email: sales@nautical-structures.com • www.nautical-structures.com