

- An exceptionally low-profile boom perfect for the Sportfish yacht.
- Ten foot long boom capable of being fully loaded to its safe working load capacity in *any* position without restriction.
- Features our silent operating *Hydraulic Linear Winch* system, a totally non-fouling winch design.
- Powered by a remotely mounted one-horsepower hydraulic power unit for performance and hidden from the conditions.
- Aluminum hydraulic cylinders with internal safety locking valves actuate each function for unsurpassed corrosion resistance, power and dependability.
- Sealed roller and ball bearings permit smooth manual rotation.
- An optional hydraulic power rotating standpipe may be selected for enhanced control and ease of operation.
- A through-deck standpipe is the standard mounting structure for stability and performance.
- An optional pedestal base mount may also be used in some applications.
- System is finished to Nautical Structures highest level of quality, wash primed, exposed welds are faired, 2-part high build primed again, then two top coats of 2-part urethane paint are applied. Our standard colors are Matterhorn white, Off White and Snow White. All other colors will be special order and quoted upon request.
- Davit is assembled and tested prior to shipment.
- 1-YEAR WARRANTY including material and workmanship, electrical, hydraulic and labor. See warranty for details.

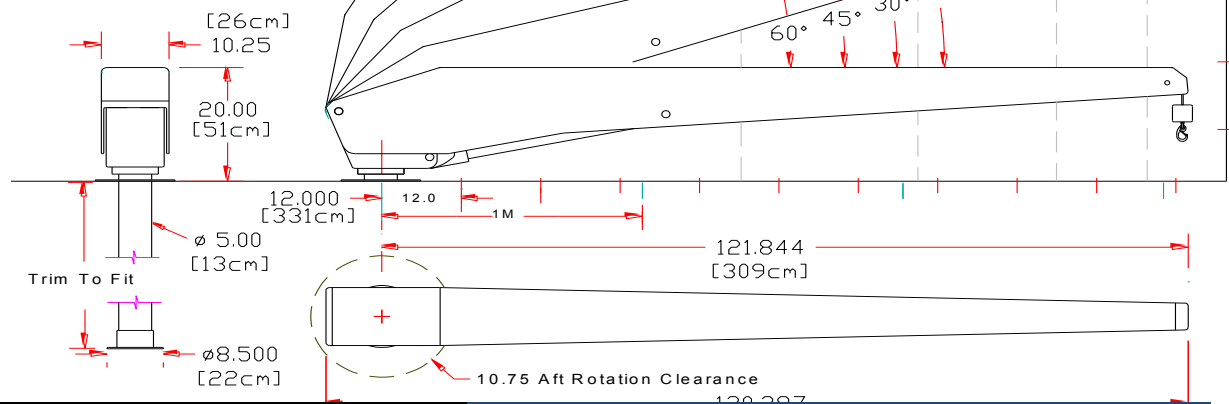


HMC Series - 3

Hydraulic Mini Crane

1100/1700lb - 120in
499/771kg - 304cm

Pedestal base mounting is available. Pedestals may be cylindrical or pyramid in style, bolt-down or weld-down in configuration.



MECHANICAL SPECIFICATIONS	ELECTRIC – HYDRAULIC SPECIFICATIONS
Hydraulic Boom Luffing from 0° through 60°.	115V AC, 60 Hz, 1 Ph. 230V AC, 60 Hz, 1 Ph. 230V AC, 50 Hz, 1 Ph.
Reach (Maximum at 15° position): 118in / 3m	Waterproof delrin remote control switch is wired to a 20ft / 6.1m removable pendant.
Reach (Minimum at 60° position): 54in / 1.37m	1 Hp Hydraulic power unit, 3000 psi / 203 bar, 0.5 gpm / 1.8 lpm output. Fluid type: AW-68, ISO quality 17/15/12
Aft rotation clearance: 10.75in / 27cm	
Rotation: 359 degree hydraulic rotary actuator.	
Hydraulic Linear Winch system. Rigged 6:1 with stainless steel wire rope, brass weight and stainless steel safety snap hook.	
Cable pay-out: 21ft / 6.4m	
System weight, HMC-1100-3: 350lb / 136kg System weight, 5" Standpipe: 185lb / 159kg	
System weight, HMC-1700-3: 350lb / 145kg System weight, 5" Standpipe: 210lb / 159kg	

RATED CAPACITY

HMC-1100-3-120:	1,100lb / 500kg
HMC-1700-3-120:	1,700lb / 771kg

HMC-1100: 11,000 ft/lb Maximum moment capacity.
HMC-1700: 17,000 ft/lb Maximum moment capacity.

12 Month limited warranty.

© 2014 - NSI

7301 114th Avenue North • Largo, Florida 33773

Phone: (727) 541-6664 • Facsimile: (727) 541-6353 • North America Toll Free: (888) 541-6664

Email: sales@nautical-structures.com • www.nautical-structures.com