



**NAUTICAL
STRUCTURES**
Marine Engineering and Manufacturing

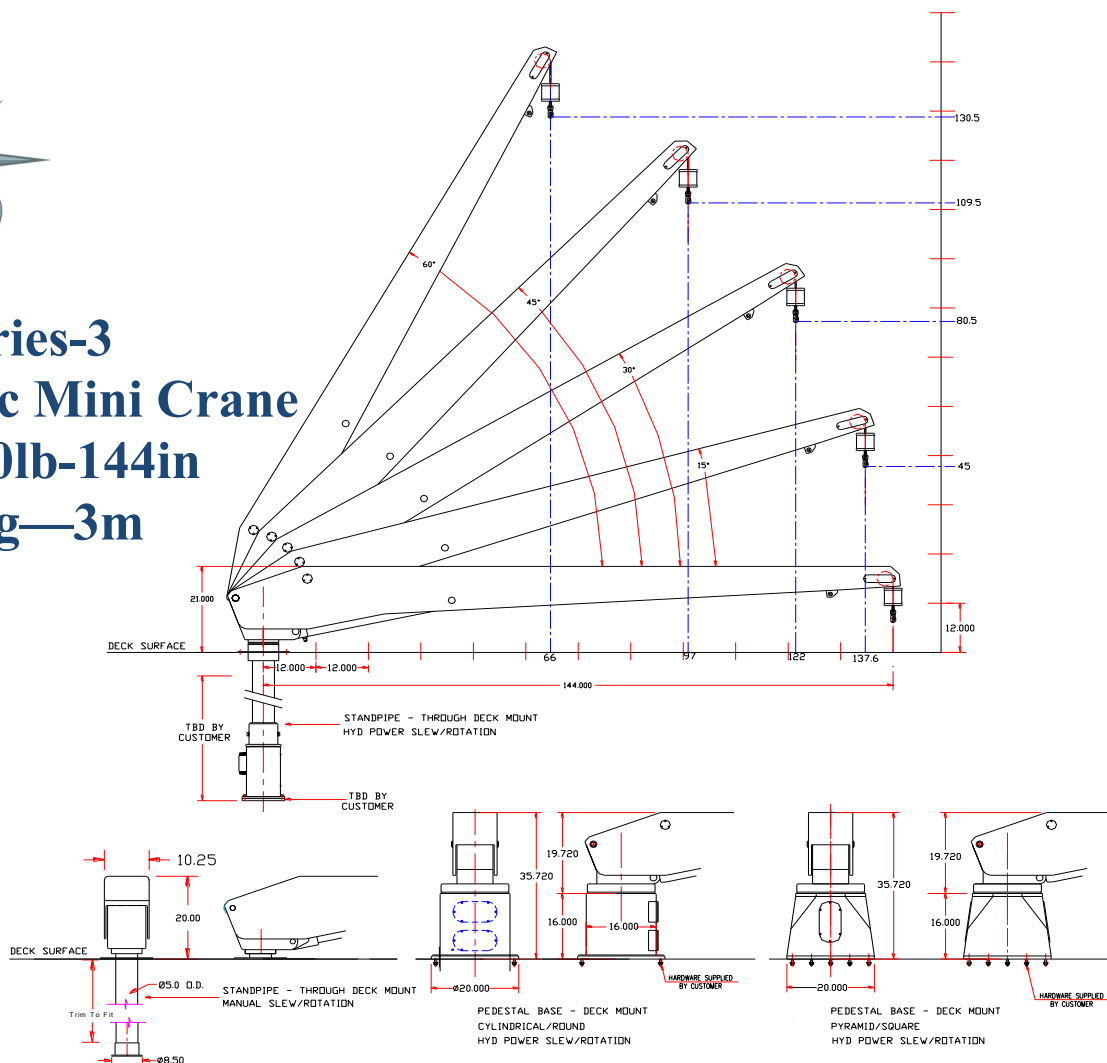
**HMC Series-3
Hydraulic Mini Crane
1100/1700lb-144in
499/771kg-3m**



- Available in 1,100-lb [498-kg] or 1,700-lb [771kg] maximum capacity.
- 12-ft [3mm] boom length, measured from center of rotation to the end of the boom.
- Hydraulic boom luffing (raising/lowering the boom/arm), capable of the maximum rated capacity in any position without restriction.
- Featuring our non-fouling linear winch design with self-limiting travel, two-block protection, self-locking load holding capabilities, automatic lifting overload protection (L.O.P.) for safe, dependable, quiet cable payout and retrieval.
- Aluminum hydraulic cylinders with integrated safety locking valves for safe operation, enhanced protection against corrosion and reduced weight.
- Hydraulic power rotation/slewing for enhanced control and ease of operation.
- A through-deck mount standpipe is the typical mounting structure for the *HMC* Davit, although a deck mounted pedestal base, cylindrical [round] or pyramid [square] design is available.
- Hydraulic power unit, one-horsepower with tray for remote mount.
- The davit system is finished to our Nautical Structures high level of quality with urethane paint products. Our standard colors are Snow White, Off White & Matterhorn White. All other colors will be special order and quoted upon request.
- System assembled and dynamic load tested prior to shipment.
- 1- YEAR WARRANTY including materials and workmanship, electrical, hydraulic and labor, see warranty for details.



HMC Series-3 Hydraulic Mini Crane 1100/1700lb-144in 499/771kg—3m



MECHANICAL SPECIFICATIONS	ELECTRIC – HYDRAULIC SPECIFICATIONS
Hydraulic Boom Luffing from 0° through 60°.	110/120V AC, 60 Hz, 1 Ph. Supply on a 25 amp breaker. 220/230V AC, 60 Hz, 1 Ph. Supply on a 20 amp breaker. 230V AC, 50 Hz, 1 Ph. Optional configuration.
Reach (Maximum at 15° position): 138in / 350cm	Removable, waterproof Delrin remote control with a 20' [6.1-m] pendant tether and weather connectors.
Reach (Minimum at 60° position): 65in / 165cm	
Aft rotation clearance: 10.75in / 27cm	
359° hydraulic power rotation/slew .	1 hp Hydraulic power unit, 3000 psi-203 bar.0.5gpm / 1.8lpm output. Fluid type: AW-68, ISO quality 17/15/12
Hydraulic Linear Winch system. Rigged 6:1 with stainless steel wire rope, brass weight and stainless steel safety snap hook.	RATED CAPACITY
Cable pay-out: 21ft / 6.40m	HMC1100-144: 1,100 Pounds / 499kg HMC1700-144: 1,700 Pounds / 771 kg
Davit weight, HMC1100-144: 318lb / 144kg Standpipe weight, 5" dia., man rot.: 86lb / 39kg	HMC1100: 13,200 Ft/Lb. Maximum moment capacity. HMC1700: 20,400 Ft/Lb. Maximum moment capacity.
System weight, HMC1600-144: 338lb / 153kg Standpipe weight, 5in DIA manual rotation 137lb/ 62kg	12 Month limited warranty.
	© 2014 - NSI

7301 114th Avenue North • Largo, Florida 33773

Phone: (727) 541-6664 • Facsimile: (727) 541-6353 • North America Toll Free: (888) 541-6664

Email: sales@nautical-structures.com • www.nautical-structures.com