



- **Winch:** Electric drum winch with automatic braking in 12V or 24V DC.
- **Manual boom articulation:** Positive locking pneumatic boom assist system that reduces the weight of the boom/arm when lifting it into position. Four pre-set boom positions/angles for various reaches with full lifting capacity; boom angle is adjustable prior to lifting the load. Please note this davit is not designed to be loaded or hoist from the horizontal stowed position.
- **Line/Cable Type:** 20ft / 6m stainless steel wire rope with solid brass cable weight & stainless steel safety hook.
- **Manual rotation/slew:** 360-degree with a custom *Delrin* bearing package for ease of operation.
- **Standpipe mounting structure:** Through deck mount, aluminum construction with a welded upper deck flange, flange trim cover, lower trim ring and receiving socket. Standard deck flange angle is 0-degrees unless otherwise specified. Also available is a deck mount pedestal base, cylindrical [round] or pyramid [square].
- **Control System:** Removable, hand held control for cable in/out, low voltage DC with pendant & connector.
- **Bushings:** Composite high load bushings at stainless load pin to aluminum contact points.
- **Paint:** System is finished to our Nautical Structures high level of quality with urethane paint products. Our standard colors are Snow White, Off White & Matterhorn White. All other colors will be special order and quoted upon request.
- Davit is assembled and tested prior to shipment.
- **12 Month Limited Warranty:** HYDRAULICS, ELECTRICAL AND LABOR IS INCLUDED. (See Warranty for details)



MC Series

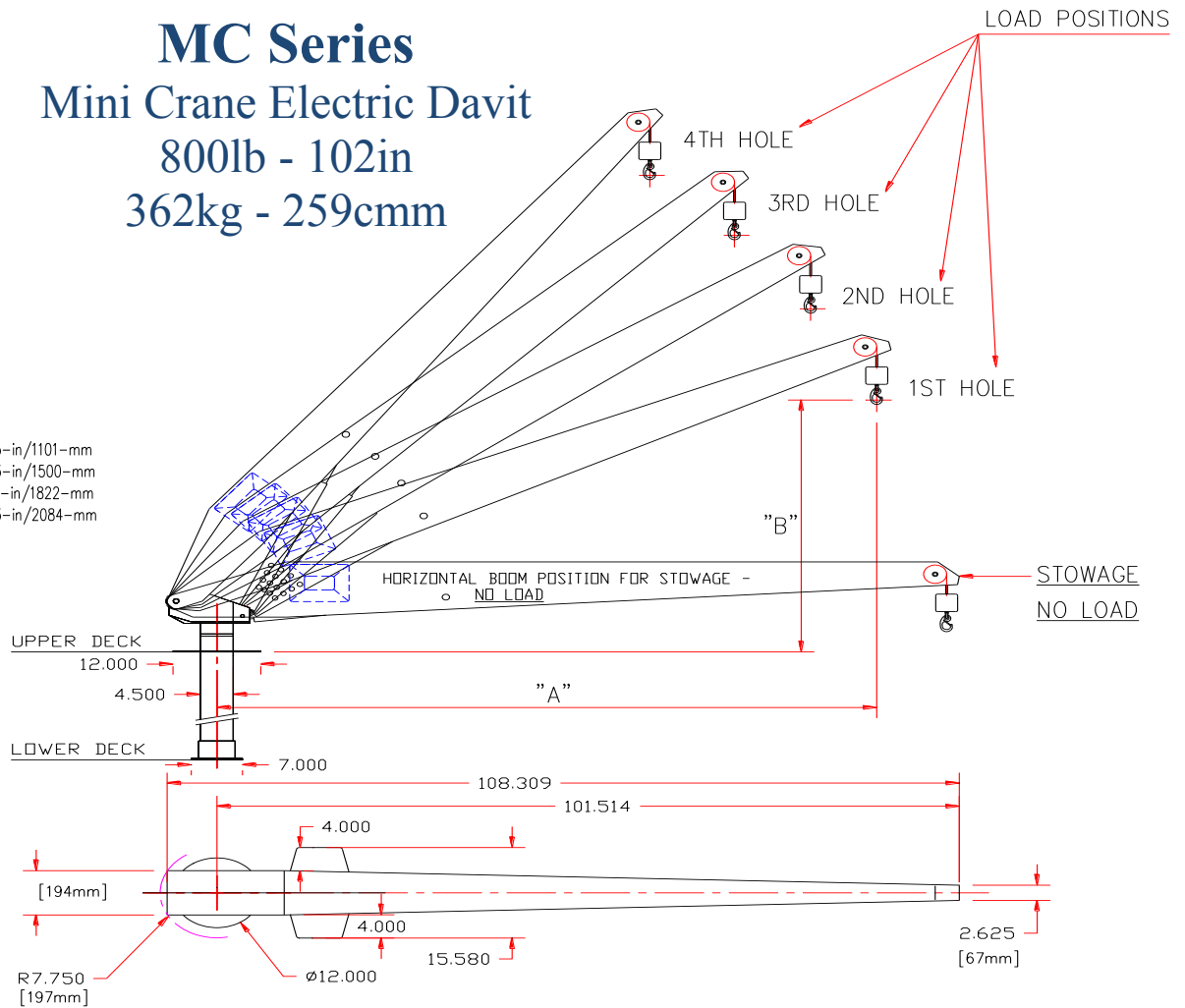
Mini Crane Electric Davit

800lb - 102in
362kg - 259cmm

CABLE: 1/4-in
PAYOUT: 20'-0" (240-in/6069-mm)
RIG: DRUM WINCH

"HOLE"	"A"	"B"
1ST	90.218-in/2291-mm	43.375-in/1101-mm
2ND	81.188-in/2062-mm	59.093-in/1500-mm
3RD	70.750-in/1797-mm	71.750-in/1822-mm
4TH	59.188-in/1503-mm	82.063-in/2084-mm

WINCH/LINEAR: ELECTRIC
BOOM/LUFF: MANUAL
ROTATION: MANUAL



MECHANICAL SPECIFICATIONS	ELECTRICAL SPECIFICATIONS
Reach (Maximum at 25° position): 96in / 247cm Reach (Nominal at 35° position): 86in / 218cmm	12V DC / 24V DC 115V AC, 60 Hz, 1 Ph 230V AC, 60 Hz, 1 Ph.
Reach (Nominal at 45° position): 75in / 190cm Reach (Minimum at 55° position): 58in/ 147cm	Remote control switch is wired to a 8ft / 2.43m removable pendant. Wireless remote control is available as an option.
Aft rotation clearance: 8.5in / 21cm	Use a minimum 4 gauge wire for supply power to a 80 amp breaker. For power runs in excess of 30' / 9m use a minimum 1-0 wire. Consult wire size/ gauge chart for proper wire and breaker size based on length of wire run.
Manual rotation on Delrin bearings: 360°	RATED CAPACITY
Planetary geared electric winch. Rigged with stainless steel wire rope, brass weight and stainless steel safety snap hook.	
Cable pay-out: 20ft / 6.1m	MC 800 lb. (362kg) Boom length: 102in / (2.59m)
Manual Boom Luffing with PBAS, 4 Positions.	12 Month limited warranty. © 2014 - NSI
System weight, Davit system: 135lb / 61kg System weight, Standpipe: 37lb / 17kg	

7301 114th Avenue North • Largo, Florida 33773

Phone: (727) 541-6664 • Facsimile: (727) 541-6353 • North America Toll Free: (888) 541-6664

Email: sales@nautical-structures.com • www.nautical-structures.com