



**NAUTICAL
STRUCTURES**
Marine Engineering and Manufacturing

MC Series
Telescopic Mini Crane
800lb (362kg)
81 to 104in (205.7 to 264cm)



SWL: 800-pound (362kg) maximum lifting capacity.

Stowed dimension: 81-in / 2057-mm measured from the center of rotation to the end of the boom/arm with boom in the stowed horizontal position and the boom extension retracted.

Boom extension: 24-in / 609-mm, manual pull out.

Winch: Electric drum winch with automatic braking in 12V DC or 24V DC.

Manual boom articulation: Positive locking pneumatic boom assist system that reduces the weight of the boom/arm when lifting it into position. Four pre-set boom positions/angles for various reaches with full lifting capacity; boom angle is adjustable prior to lifting the load. Please note this davit is not designed to loaded or hoist from the horizontal stowed position.

Line/Cable Type: 20-ft / 6-m stainless steel wire rope with solid brass cable weight & stainless steel safety hook.

Manual rotation/slew: 360-degree with a custom Delrin bearing package for ease of operation.

Standpipe mounting structure: Through deck mount, aluminum construction with a welded upper deck flange, flange trim cover, lower trim ring and receiving socket. Our standard deck flange angle is 0-degrees unless otherwise specified by customer. An optional pneumatic telescopic standpipe is available that allows the davit to stow at its' typical low profile but upon manual deployment the davit is raised vertically an additional 16-in / 406-mm for increased clearance.

Control System: Removable, hand held control for cable in/out, low voltage DC with pendant and connector.

Bushings: Composite high load bushings at stainless to aluminum contact points.

Paint: System is finished to our Nautical Structures high level of quality with urethane paint products. Our standard colors are Snow White, Off White & Matterhorn White. All other colors will be special order and quoted upon request.

12 Month Limited Warranty: HYDRAULICS, ELECTRICAL AND LABOR IS INCLUDED (see attached warranty for details).



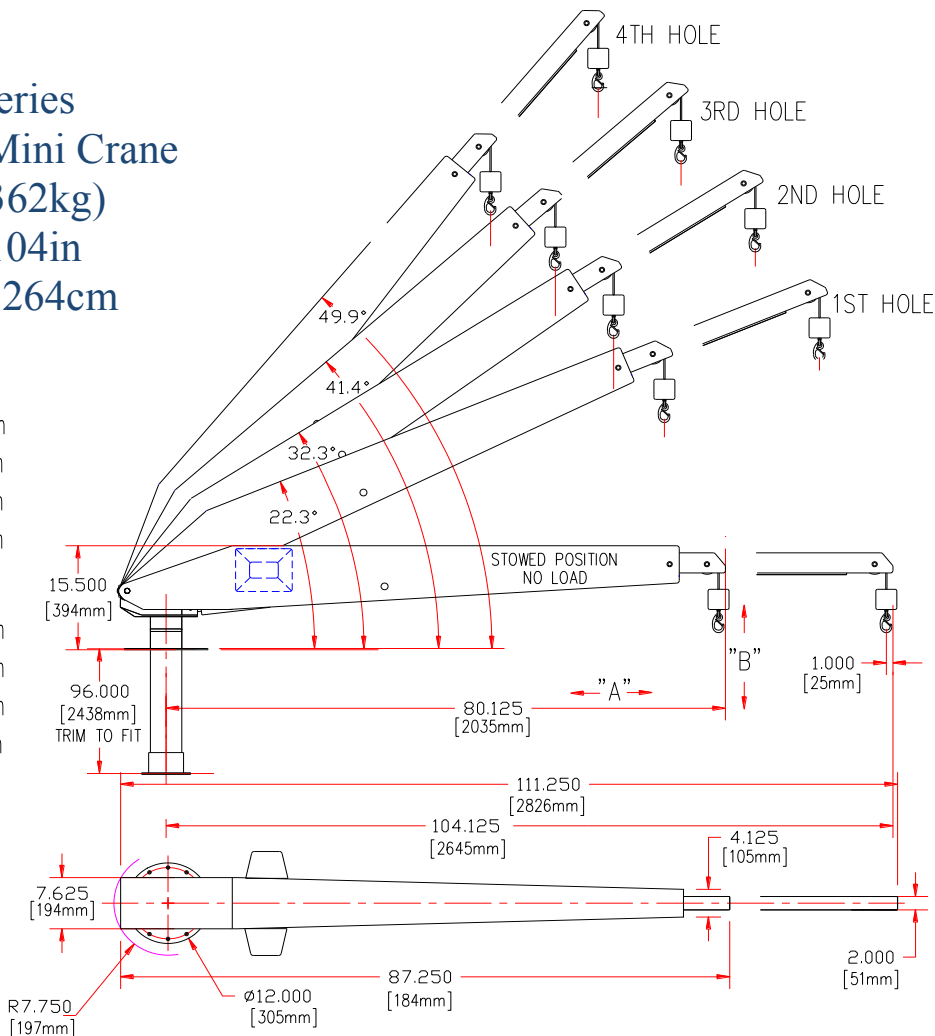
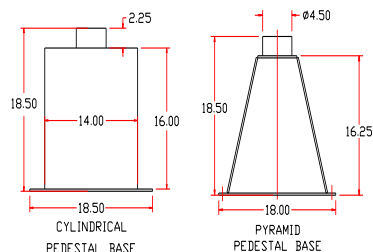
MC Series Telescopic Mini Crane 800lb (362kg) 81 to 104in 205.7 to 264cm

"HOLE" "A" RETRACTED → "A" EXTENDED

1ST	71.30-in/1811-mm	93.60-in/2378-mm
2ND	64.00-in/1625-mm	84.40-in/2144-mm
3RD	55.75-in/1416-mm	73.75-in/1873-mm
4TH	46.50-in/1181-mm	62.00-in/1575-mm

"B" RETRACTED ↑ "B" EXTENDED

1ST	33.80-in/ 858-mm	43.00-in/1092-mm
2ND	46.40-in/1179-mm	59.20-in/1504-mm
3RD	56.50-in/1435-mm	72.40-in/1839-mm
4TH	64.80-in/1646-mm	83.20-in/2113-mm



ELECTRIC SPECIFICATIONS

Reach Max. (Extended at 22° position): 93.60 in / 236 cm	DC SYSTEMS MC 800-DC:12V DC, 100amp / 24V DC
Reach Nom.(Extended at 41° position): 73.75 in / 187 cm	
Reach Min.(Retracted at 50° position): 46.50 in / 118 cm	
Aft rotation clearance: 7.75 in / 19.7 cm	Weather resistant two-button remote control switch is wired to a 8ft / 2.4m removable pendant.
Manual rotation on delrin bearings: 360°	
Planetary geared electric winch. Rigged with stainless steel wire rope, brass weight and stainless steel safety snap hook,	RATED CAPACITY MC800-81-104: 800 Pounds / 362kg 6240 ft/lb Maximum moment capacity. 12 Month limited warranty.
Cable pay-out: 20' / 6.1 m	
Manual Boom Luffing with PBAS, 4 Positions.	
System weight, Davit system: 155lb. / 70 kg	© 2014 - NSI
System weight, Standpipe: 37lb / 17 kg	

7301 114th Avenue North • Largo, Florida 33773

Phone: (727) 541-6664 • Facsimile: (727) 541-6353 • North America Toll Free: (888) 541-6664

Email: sales@nautical-structures.com • www.nautical-structures.com