



**NAUTICAL
STRUCTURES**
Marine Engineering and Manufacturing

EURO Series - 2
1200/1700kg-126in
544/771kg-320cm



EURO-SYSTEMS HYDRAULIC DAVIT SYSTEM

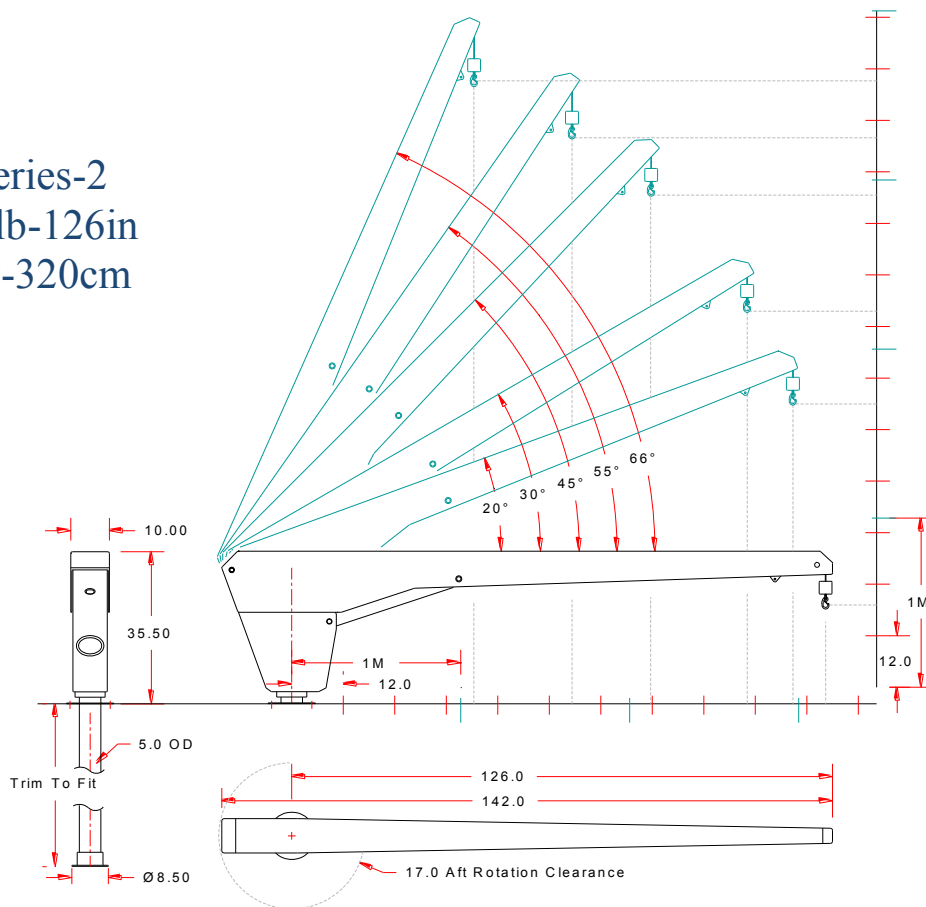
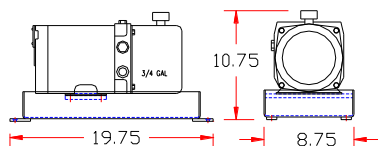
Nautical Structures' EURO-1200-2 and EURO-1700-2 (manual rotation) Hydraulic Davit System. Compare the features of this davit against any other and you will find the performance and value of this equipment unsurpassed. The davit features a generous ten-and-a-half foot-long boom that is capable of being fully loaded to its full safe working load capacity in *any* position without restriction. The enhanced lifting capacity is more than adequate to safely handle the newest four-stroke personal watercrafts. With operational safety being our prime focus, the *EURO-Systems* davit features our silent operating *Hydraulic Linear Winch* system, a totally non-fouling winch design. The hydraulic davit is powered by an remotely-mounted one-horsepower hydraulic power unit. Aluminum hydraulic cylinders, standard in all *EURO-Systems* davits actuate the boom and winch functions for unsurpassed corrosion resistance, power dependability and reduced weight. The *EURO-1200-2 & 1700-2 davit features 360° manual rotation*. A through-deck standpipe is the typical mounting structure for the *EURO-Systems* Davit, although a pedestal base mount may also be used in some applications. Our new efficient design greatly enhances the ease of installation, stripping away installation man-hours. The EURO Davit System is finished to our highest standards. The structure is aluminum prepped then primed with a two-part epoxy primer. Then the system is faired, and then primed again. The davit is hand sanded, and then moved into our heated finish booth where it is coated with a two-part high level quality urethane spray-applied paint finish, our standard colors are Matterhorn white, Off white, and Snow white. All other colors will be special order and quoted upon request. The davit system is assembled and then moved onto our dynamic load-testing center where our quality assurance department load tests every davit we produce prior to delivery to the customer.



EURO Series-2 1200/1700lb-126in 544/771kg-320cm

Pedestal base mounting is available.
Pedestals may be cylindrical or pyramid in style, bolt-down or weld-down in configuration.

Remotely mounted hydraulic power unit, mounting tray included.



MECHANICAL SPECIFICATIONS

Hydraulic Boom Luffing from 0° through 66°.	
Reach (Maximum at 0° position):	123" / 312 cm
Reach (Minimum at 65° position):	46.0" / 116 cm
Aft rotation clearance:	17" / 43 cm
Manual Power Rotation: 360° Aluminum Hydraulic Cylinders w/ Integrated locking valves	
<i>Hydraulic Linear Winch system.</i> Rigged 6:1 with stainless steel wire rope, brass weight and stainless steel safety snap hook.	
Cable pay-out:	21' / 6.40m
System weight, EURO-1200-3:	400lb / 182kg
System weight, 4" Standpipe:	97lb / 44kg
System weight, EURO-1700-3:	420lb / 190kg
System weight, 5" Standpipe:	137lb / 62kg

ELECTRIC – HYDRAULIC SPECIFICATIONS

115V AC, 60 Hz, 1 Ph. Supply on a 25 amp breaker.
230V AC, 60 Hz, 1 Ph. Supply on a 20 amp breaker.
230V AC, 50 Hz, 1 Ph. Optional configuration.

Waterproof delrin remote control switch is wired to a
20' / 6.1m removable pendant.

1 Hp Hydraulic power unit, 3000 psi / 203 bar, 0.5 gpm / 1.8 lpm output. Remotely Mounted.

Fluid type: AW-68, ISO quality 17/15/12

RATED CAPACITY

EURO-1200-3-126:	1,200lb / 544kg
EURO-1700-3-126:	1,700lb / 771kg.

EURO-1200: 12,600 ft/lb Maximum moment capacity.
EURO-1700: 17,850 ft/lb Maximum moment capacity.

12 Month limited warranty.

© 2014 - NSI

7301 114th Avenue North • Largo, Florida 33773

Phone: (727) 541-6664 • Facsimile: (727) 541-6353 • North America Toll Free: (888) 541-6664

Email: sales@nautical-structures.com • www.nautical-structures.com