

- **SWL** capacities of 1700lb (771kg), 2000lb (907kg), 2200lb (998kg) or 2500lb (1134kg) are available.
- **Boom length:** A generous 10.5ft (3.2m) boom, capable of the full safe working load capacity in *any* position without restriction, An optional 12ft (3.65m) boom/arm length is available. (Boom/arm length is measured from the center of rotation to the end of the boom/arm).
- **Hydraulic Linear Winch** system, a silent operating, totally non-fouling winch design with load holding internal safety locking valves, two block protection and automatic lift overload protection.
- **Hydraulic cylinders**, aluminum construction with internal safety locking valves for unsurpassed safety, dependability, corrosion resistance and reduced weight.
- **Hydraulic power rotation/slew**, 359-degrees for enhanced control.
- **Mounting structure:** A through-deck mounting aluminum standpipe provides secure attachment to vessel. Also available for some applications is our deck mounted pedestal base in either a cylindrical [round] or pyramid [square] configuration.
- **Paint:** System is finished to our Nautical Structures high level of quality with urethane paint products. Our standard colors are Snow White, Off White & Matterhorn White. All other colors will be special order and quoted upon request.
- **System is load tested** prior to shipment.
- **WARRANTY**, 1-YEAR including materials and workmanship, electrical, hydraulic and labor, see warranty for details.

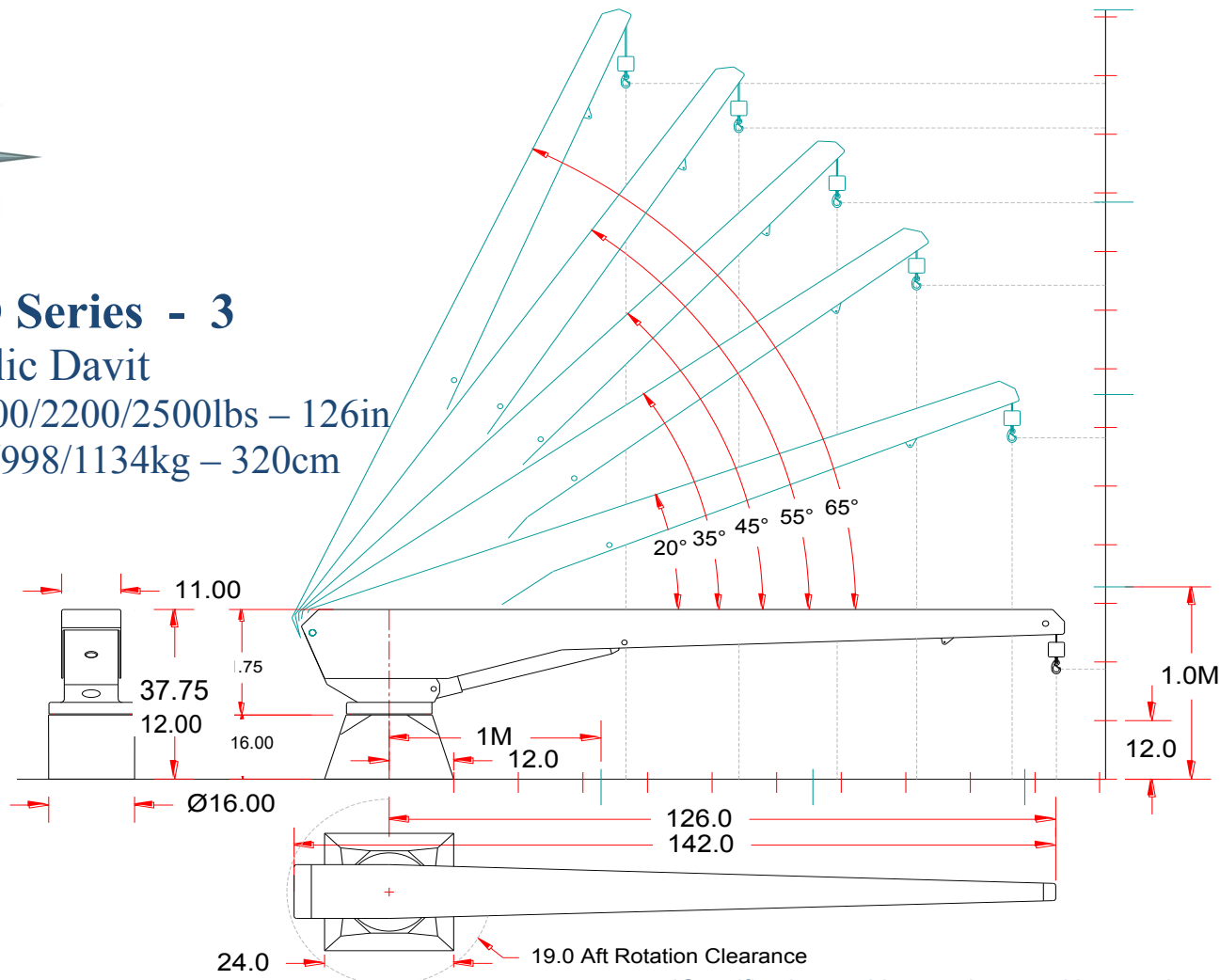


## EURO Series - 3

### Hydraulic Davit

1700/2000/2200/2500lbs – 126in

771/907/998/1134kg – 320cm



\*Specifications subject to change without notice.

#### MECHANICAL SPECIFICATIONS

Hydraulic Boom Luffing: from 0° through 65°.

Reach (Maximum at 0° position): 126in / 320cm  
 Reach (Nominal at 45° position): 83in / 210cm  
 Reach (Minimum at 66° position): 46in / 116cm

Aft rotation clearance: 19in / 48cm  
 359° hydraulic power rotation.

*Hydraulic Linear Winch system.*

Rigged 6:1 with stainless steel wire rope, stainless steel weight and stainless steel safety snap hook.

Cable pay-out: 21ft / 6.40m

Davit weight, EURO1700-3-126: 465lb / 211kg  
 Davit weight, EURO2000-3-126: 475lb / 215kg  
 Davit weight, EURO2200-3-126: 525lb / 238kg  
 Davit weight, EURO2500-3-126: 528lb / 240kg  
 Standpipe weight: 290lb / 132kg  
 Pedestal base weight: 70lb / 32kg

#### ELECTRIC – HYDRAULIC SPECIFICATIONS

110/220V AC 50/60 Hz, 1P is standard for the EURO 1700  
 220V AC, 60 Hz, 1 Ph is standard on the EURO 2000/2200/2500.

Removable waterproof remote control with 20ft (6.1m) tether.  
 2-Speed (high/low) controls are standard on the 2,000 thru 2,500 capacities.  
 Wireless joy-stick operated proportional control is optional.

1Hp HPU. 3000 psi / 203 bar, 0.5 gpm / 1.9 lpm output is standard for the EURO 1700.

5 Hp HPU, 3000 psi / 203 bar, 0.9 gpm / 3.4 lpm output is standard for the EURO 2000./2200/2500.

Fluid type: *Terresolve Envirologic 146* biodegradable, non-toxic, non hazardous AW-68, ISO quality 17/15/12

#### RATED CAPACITY

EURO 1700-3-126: 1,700lb / 771kg  
 EURO 2000-3-126: 2,000lb / 907kg  
 EURO 2200-3-126: 2,200lb / 998kg  
 EURO 2500-3-126: 2,500lb / 1134kg

12 Month limited warranty..

© 2014 - NSI

7301 114th Avenue North • Largo, Florida 33773

Phone: (727) 541-6664 • Facsimile: (727) 541-6353 • North America Toll Free: (888) 541-6664

Email: sales@nautical-structures.com • www.nautical-structures.com