



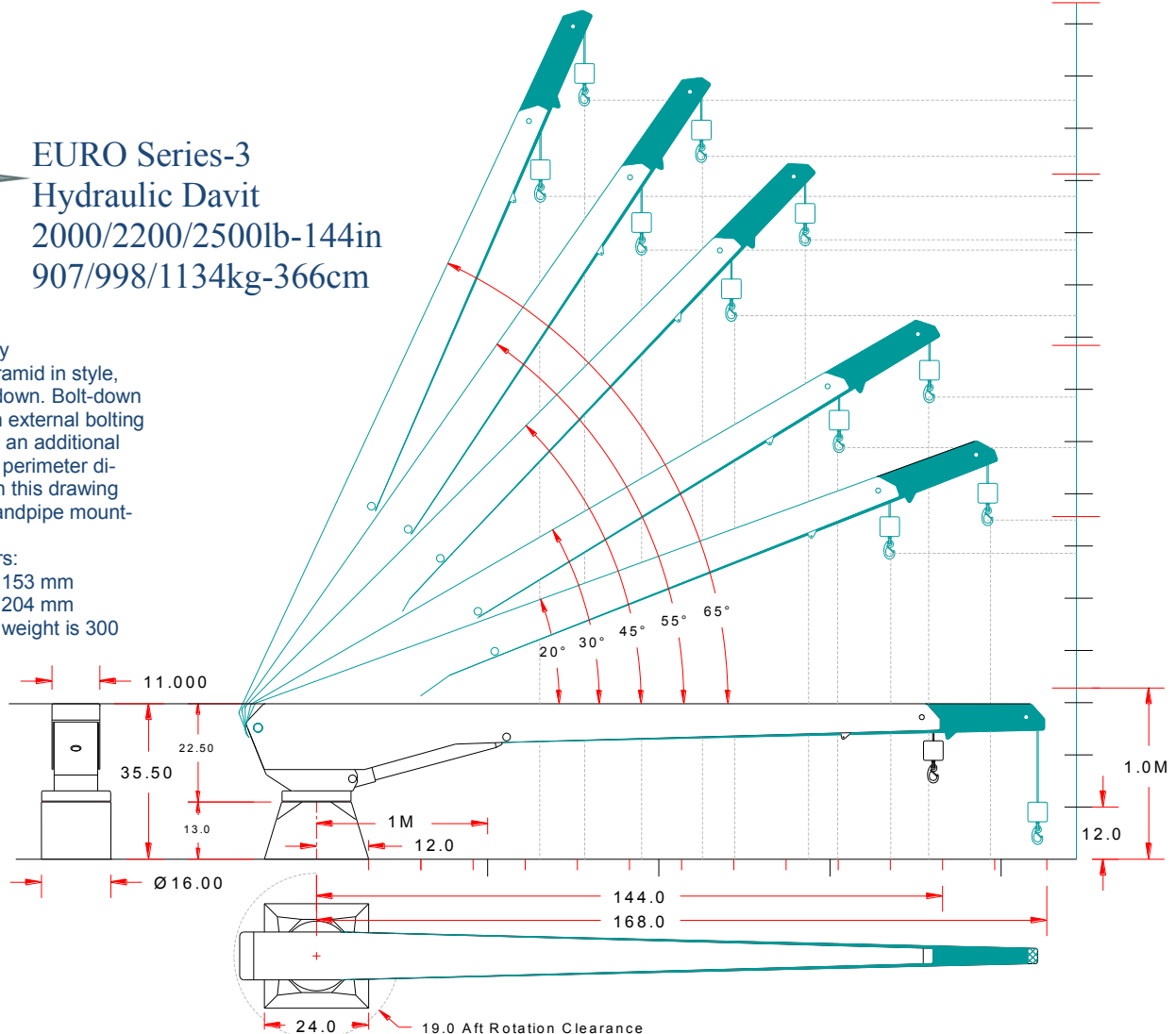
## EURO 2000/2200/2500 Hydraulic Deck Crane Systems

- Maximum SWL capacities available in 2,000lb / 907kg, 2,200 lb/ 997kg & 2,500lb / 1134kg at any boom position without restriction.
- Flush access panels are appropriately located for easy maintenance.
- A non-fouling Hydraulic linear winch design with self-limiting travel, two-block protection, self-locking load holding capabilities and automatic lift overload protection for safe, dependable and quiet cable payout & retrieval.
- The crane is operated from a hand held, waterproof, UV stabilized 2-speed hi/lo controller with tether and weatherproof mil-spec connectors.
- Optional wireless joystick operated proportional remote controls are available.
- High pressure aluminum hydraulic cylinders actuate each function for unsurpassed corrosion resistance, dependability and reduced weight.
- Hydraulic power rotation/slew, 359° providing the superior tender-handling control.
- An aluminum deck mounted pedestal base is the standard mounting structure. Pedestal bases are offered in a cylindrical or pyramid style, bolt down or weld down. Also available is a through deck mount standpipe/compression post.
- The hydraulic davit is powered by a remotely mounted 5-hp hydraulic power unit for enhance performance and reliability. Also available is our ship's central hydraulics interface kit.
- Composite high load bushings at stainless load pin to aluminum contact points to prevent hole deformation and dissimilar metals corrosion.
- System is finished to our Nautical Structures high level of quality with urethane paint products. Our standard colors are Snow White, Off White & Matterhorn White. All other colors will be special order and quoted upon request.
- Davit is assembled and dynamic load tested prior to shipment.
- 12 Month Limited Warranty: HYDRAULICS, ELECTRICAL AND LABOR IS INCLUDED (see attached warranty for details).



# **EURO Series-3 Hydraulic Davit** 2000/2200/2500lb-144in 907/998/1134kg-366cm

Pedestal bases may be cylindrical or pyramid in style, bolt-down or weld-down. Bolt-down bases may have an external bolting flange. Please add an additional 3.0" / 76 mm to the perimeter dimensions shown on this drawing for this feature. Standpipe mounting is available.  
Standpipe diameters:  
24,000 ft/lb.: 6.0" / 153 mm  
30,000 ft/lb.: 8.0" / 204 mm  
Average standpipe weight is 300 Lb. / 136 Kg.



## MECHANICAL SPECIFICATIONS

Hydraulic Boom Luffing:	144in Boom	168in Boom
	Inch / Centimeter	Inch / Centimeter
Reach (Maximum at 0° position):	142in/360cm	166in/421cm
Reach (Nominal at 45° position):	96in/244cm	113in/287cm
Reach (Minimum at 60° position):	51in/130cm	62in/158cm
Aft rotation clearance:	19in / 48cm	
360° hydraulic power rotation.		
<i>Hydraulic Linear Winch system.</i>		
Rigged 6:1 with stainless steel wire rope, stainless steel weight and stainless steel safety snap hook.		
Cable pay-out:	21ft / 6.40m	
System weight, EURO-2200-3-144:	650lb / 295kg.	
System weight, EURO-2000-3-168:	675lb / 306kg.	
System weight, EURO-2500-3-144:	650lb / 295kg	
System weight, pedestal base:	70lb / 32kg	

## ELECTRIC – HYDRAULIC SPECIFICATIONS

115V AC, 60 Hz, 1 Ph. Supply on a 25 amp breaker. 230V AC, 60 Hz, 1 Ph. Supply on a 20 amp breaker. 230V AC, 50 Hz, 1 Ph. Optional configuration.
2-Speed (high/low) waterproof delrin remote control switch is wired to a 20' / 6.1m removable pendant. Joy-stick operated proportional control is optional.
3.5 Hp HPU, 3000 psi / 203 bar, 1.0 gpm / 3.8 lpm output. Fluid type: AW-68, ISO quality 17/15/12

## RATED CAPACITY

EURO-2200-3-144: 2,200lb / 1000kg
EURO-2000-3-168: 2,000lb / 909kg
EURO-2500-3-144: 2,500lb / 1136kg

30,000 foot/pounds Maximum moment capacity.

12 Month limited warranty

© 2014 - NSI

7301 114th Avenue North • Largo, Florida 33773

Phone: (727) 541-6664 • Facsimile: (727) 541-6353 • North America Toll Free: (888) 541-6664

Email: sales@nautical-structures.com • www.nautical-structures.com