



**NAUTICAL
STRUCTURES**
Marine Engineering and Manufacturing

EZ DECK CRANE
Hydraulic Single Telescopic
Lay-Down Series
2,500lb/1134kg to 20,000lb/9070kg
SOLAS



EZ Hydraulic Single Telescopic Lay-Down Series

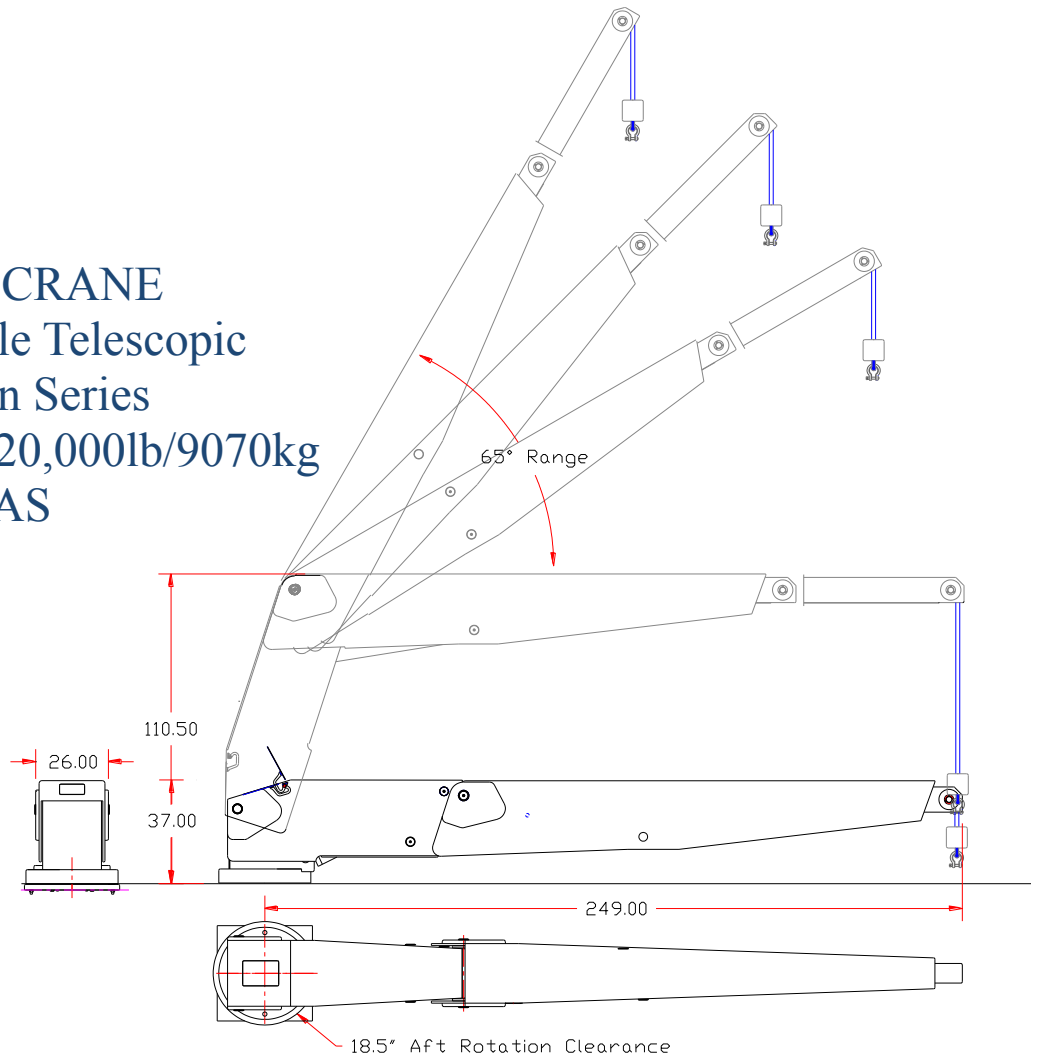
For over a decade the *EZ-Systems* Hydraulic Deck Crane has proven to be of the highest state-of-the-art yacht crane technology in an aesthetically pleasing design. Nautical Structures manufactures the Lay-Down crane design in capacities from 2,500lb/1134kg to 20,000lb/9070kg, with and without hydraulic telescoping boom sections. The *EZ-6600-LD-EX* shown (*above*) is a 6600-pound (3000 Kg) capacity crane featuring a lay-down boom design, with a telescoping boom section included. The *EZ-6600-LD-EX* telescoping aluminum boom is capable of being loaded to its full safe working load capacity in *any* position without restriction. The intelligent engineering inherent in this design allows distributed load-deflection across the boom during moments of dynamic loading, reducing the amount of shock-loading transmitted to the deck. Virtually silent-operating, our *Hydraulic Linear Winch* system, a totally non-fouling winch design reflects the innovative and dependably safe operating characteristics built into the extending boom. This feature adds the additional element of operational safety as the winch travels with the boom extension during operation of the crane. This prevents any possibility of two-blocking the system causing damage to the Spectron line. The crane features 300° hydraulic power rotation providing the ultimate in tender-handling convenience. Control of the crane is with a remotely operated wireless joy-stick proportional control. Manual hydraulic controls are also provided, located behind a hinged and latched access panel. A weld-in deck platter is the typical mount for the *EZ-Systems Lay-Down* crane. The *EZ-Systems Lay-Down* crane is finished to our highest standards. The aluminum structure is etched and then primed with a two-part epoxy primer. The system is faired smooth, and then primed again. The crane is hand sanded, then moved into our heated finish booth where it is coated with a two-part urethane spray-applied paint finish. Our standard colors are Matterhorn white, Off white and Snow white. All other colors will be a special order and quoted upon request. The crane system is static load tested to 2.2 x design load and then dynamic load tested to 1.1 x design load, with a classification society surveyor on premises for full class certification. Warranty: 1-Year including materials, electrical, hydraulic and labor. See warranty for details.



EZ DECK CRANE Hydraulic Single Telescopic Lay-Down Series

2,500lb/1134kg to 20,000lb/9070kg
SOLAS

Pedestal bases are available and may be configured for specific applications. The basis of this crane's design is a very low-profile system, capable of being built into or hiding behind bulwarks. The very low-profile design depicted requires a foundation mounting plate built into the vessel's deck structure. Floating-Flange standpipe mounting is available. Standpipe diameters will vary depending on the actual moment capacity of the crane.



MECHANICAL SPECIFICATIONS				ELECTRIC – HYDRAULIC SPECIFICATIONS
Hydraulic Boom Luffing: 0° to 58° with full load capacity.				24V DC Supply on a 20 amp breaker.
Crane;	Boom Angle	Retracted	Extended	24V DC Wireless Joy-stick operated proportional control. * Manual control back-up.
Reach	60°	103in / 262cm	133in / 338 cm	
Reach	45°	140in / 355cm	182in / 462 cm	15 Hp HPU, 3000 psi / 203 bar, 7 gpm / 26 lpm output. 20 Hp HPU, 3000 psi / 203 bar, 9 gpm / 34 lpm output. Fluid type: AW-68 or AW-34, ISO quality 17/15/12
Reach	30°	166in / 422cm	219in / 556 cm	
Reach	15°	182in / 462cm	240in / 609 cm	
Reach	0°	188in / 477cm	248in / 630 cm	
Aft rotation clearance:			16.5in / 42 cm	AVAILABLE RATED CAPACITIES
300° hydraulic power rotation.				
<i>Hydraulic Linear Winch system.</i> Rigged 6:1 with Spectron 12 Plus fiber line. ~ Stainless Steel Certified Load-Release Hook optional.~				EZ-2500-LD: 2,500lb / 1134kg Up to 50,000 ft/lb EZ-4000-LD: 4,000lb / 1814kg Up to 80,000 ft/lb EZ-5500-LD: 5,500lb / 2494kg Up to 100,000 ft/lb EZ-6600-LD: 6,600lb / 2993kg Up to 150,000 ft/lb EZ-8800-LD: 8,800lb / 3990kg Up to 200,000 ft/lb
Cable pay-out: (Enhanced pay-out is available) 35'ft / 10.66m				
Crane weight: EZ-6600-KB-EX:			4700lb / 2131kg	Foot-pound capacity; maximum reach x lifting capacity.
Weight, Bearing Platter (average):			180lb / 82kg	12 Month limited warranty.© 2014- NSI

7301 114th Avenue North • Largo, Florida 33773

Phone: (727) 541-6664 • Facsimile: (727) 541-6353 • North America Toll Free: (888) 541-6664

Email: sales@nautical-structures.com • www.nautical-structures.com