



**NAUTICAL  
STRUCTURES**  
Marine Engineering and Manufacturing

## **EZ Deck Crane**

Hydraulic Single Telescopic  
Knuckle Boom Series  
2,500/20,000 lb 1134/9070 kg  
SOLAS



For over a decade the *EZ-Systems* Hydraulic Deck Crane has proven to be of the highest state-of-the-art yacht crane technology in an aesthetically pleasing design. Nautical Structures manufactures the knuckle-Boom crane design in capacities from 2500-pounds to over 20,000-pounds (1134kg to 9070kg), with and without hydraulic telescoping boom sections. The *EZ-7,700-KB shown above* is a 7,700 pound / 3492-Kg capacity crane featuring a fold-under boom design. The crane has been engineered and designed as a true yacht crane, not just another marinized commercial crane. The *EZ-Knuckle-Boom* Crane's aluminum boom is capable of being loaded to its full safe working load capacity in *any* position without restriction. The intelligent engineering inherent in this design allows distributed load-deflection across the boom during moments of high dynamic loading, reducing the amount of shock-loading transmitted to the deck. Virtually silent-operating, our *Hydraulic Linear Winch* system, a totally non-fouling winch design reflects the innovative and dependably safe operating characteristics built into the extending boom. This feature adds the additional element of operational safety as the winch travels with the boom extension during operation of the crane. This prevents any possibility of two-blocking the system

damage to the cable. In applications complying with the MCA Mega Yacht Code, the Linear Winch is capable of being placed into a free-fall condition with operational control by the operator. The crane features 330° hydraulic power rotation providing the ultimate in tender-handling convenience. Control of the crane is with a remotely operated wireless joy-stick proportional control on a removable pendant. Manual hydraulic controls are also provided, located behind a hinged and latched access panel. A low-profile cylindrical style pedestal base is the typical mount for the *EZ-Systems Knuckle-Boom Crane*, although a standpipe mount may also be used in applications with GRP constructed vessels. The *EZ-Systems Knuckle-Boom Crane* is finished to our highest standards. The aluminum structure is etched and then primed with a two-part epoxy primer. Then the system is faired smooth, and then primed again. The crane is hand sanded, then moved into our heated finish booth where it is coated with a two-part urethane spray-applied paint finish. Our standard colors are Matterhorn white, Off white and Snow white. All other colors will be special order and quoted upon request. With MCA-LY2 Mega Yacht Code compliance, the crane system is static load tested to 2.2 x design load and then dynamic load tested to 1.1 x design load. Warranty: 1-Year including materials, electrical, hydraulic and labor. See warranty for details.

**EZ DECK CRANE SINGLE TELESCOPIC KNUCKLE BOOM SERIES  
SOLAS**

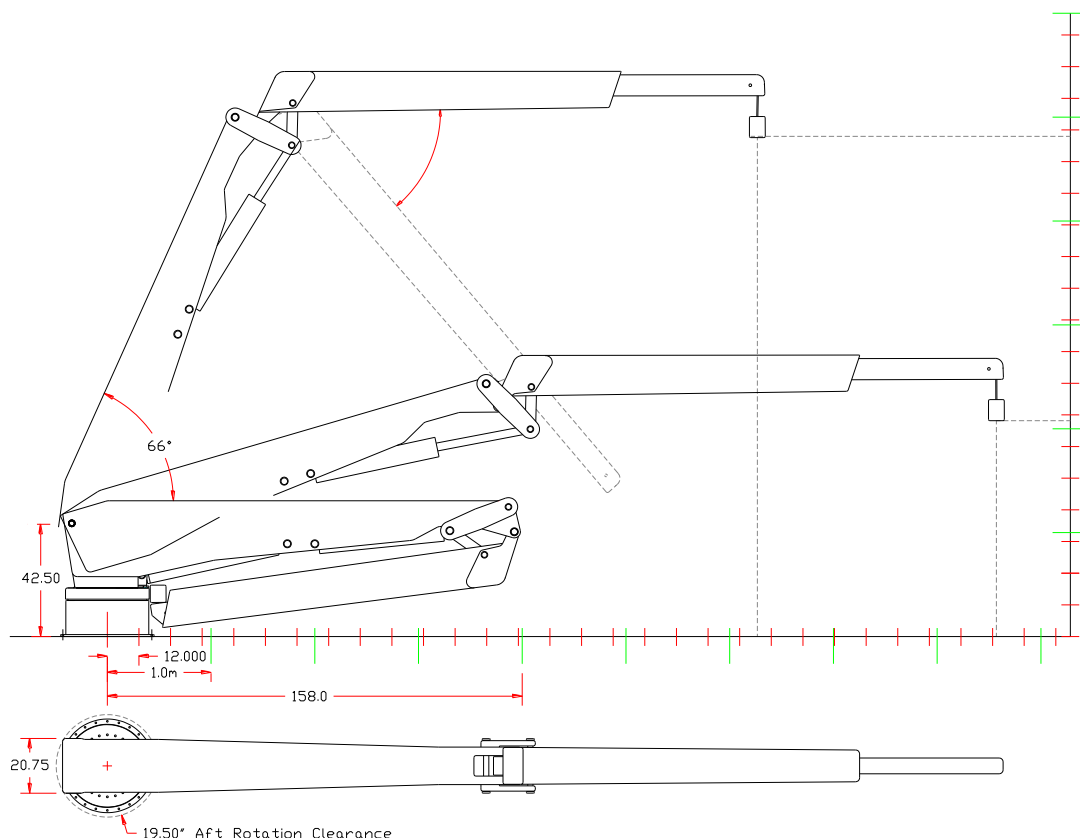


# EZ Deck Crane

## Hydraulic Single Telescopic Knuckle Boom Series

2,500/20,000 lb 1134/9070kg

Cylindrical style pedestal bases are required and will be configured for specific applications. Floating-Flange standpipe mounting is available for GRP constructed vessels. Standpipe diameters will vary depending on the actual moment capacity of the crane.



MECHANICAL SPECIFICATIONS				ELECTRIC – HYDRAULIC SPECIFICATIONS	
Hydraulic Boom Luffing: 0° to 66° with full load capacity.				24V DC Supply on a 20 amp breaker.	
Crane;	Boom Angles	Retracted	Extended	24V DC Joy-stick operated proportional control. Manual control back-up. Wireless proportional control is available as an option.	
Reach	66° / 0°	198in / 503 cm	246in / 625cm		
Reach	45° / 0°	246in / 625 cm	294in / 746cm		
Reach	30° / 0°	272in / 690 cm	320in / 812cm		
Reach	15° / 0°	290in / 736 cm	338in / 858cm		
Reach	0° / 0°	294in / 746 cm	342in / 868cm	15 Hp HPU, 3000 psi / 203 bar, 7 gpm / 26 lpm output. 20 Hp HPU, 3000 psi / 203 bar, 9 gpm / 34 lpm output. Fluid type: AW-68, ISO quality 17/15/12	
Aft rotation clearance:			22” / 56 cm		
360° hydraulic power rotation.					
Hydraulic Linear Winch system. Rigged 7:1 with wire rope or Spectron 12 Plus composite-fiber line. ~ Stainless Steel Certified Load-Release Hook optional.~				AVAILABLE RATED CAPACITIES	
EZ-2500-KB: 2,500lb / 1134kg Up to 50,000 ft/lb					
EZ-4000-KB: 4,000lb / 1814kg Up to 80,000 ft/lb					
EZ-5500-KB: 5,500lb / 2494kg Up to 100,000 ft/lb					
EZ-6500-KB: 6,600lb / 2993kg Up to 150,000 ft/lb					
EZ-8000-KB: 8,000lb / 3628kg Up to 200,000 ft/lb					
Cable pay-out:			24’ / 7.31m		
Crane weight: EZ-4000-KB-EX:			2800lb / 1272kg		
Weight, pedestal base (average):			340lb / 155kg		
				Foot-pound capacity; maximum reach x lifting capacity.	
				12 Month limited warranty.	
				© 2014- NSI	

7301 114th Avenue North • Largo, Florida 33773

Phone: (727) 541-6664 • Facsimile: (727) 541-6353 • North America Toll Free: (888) 541-6664

Email: sales@nautical-structures.com • www.nautical-structures.com